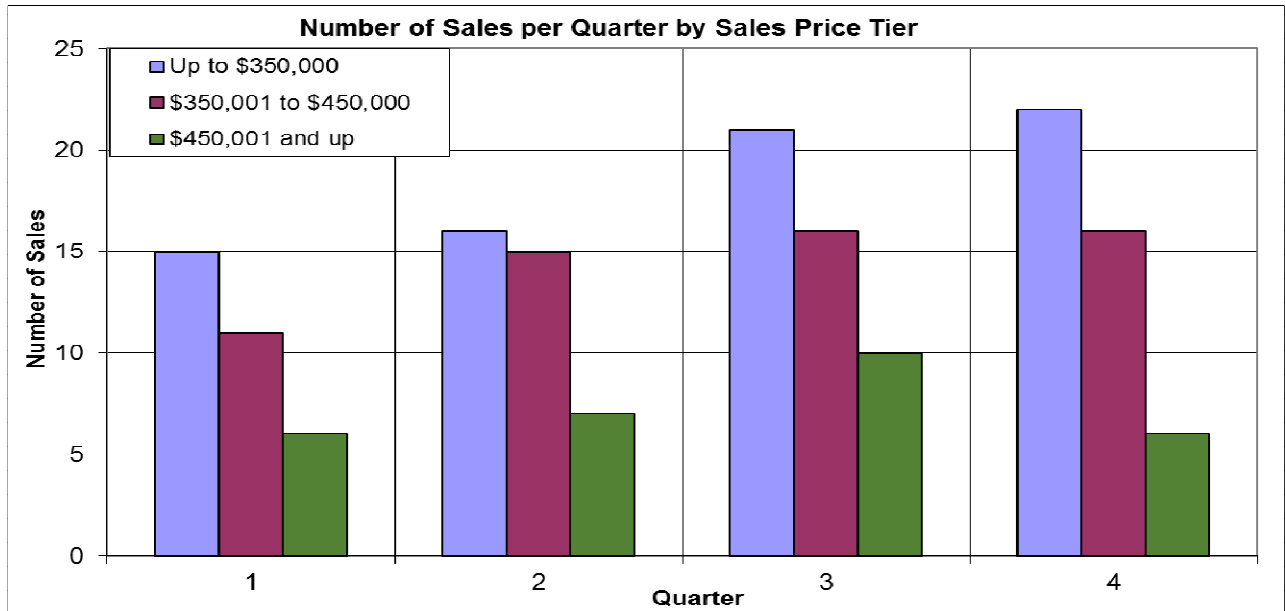
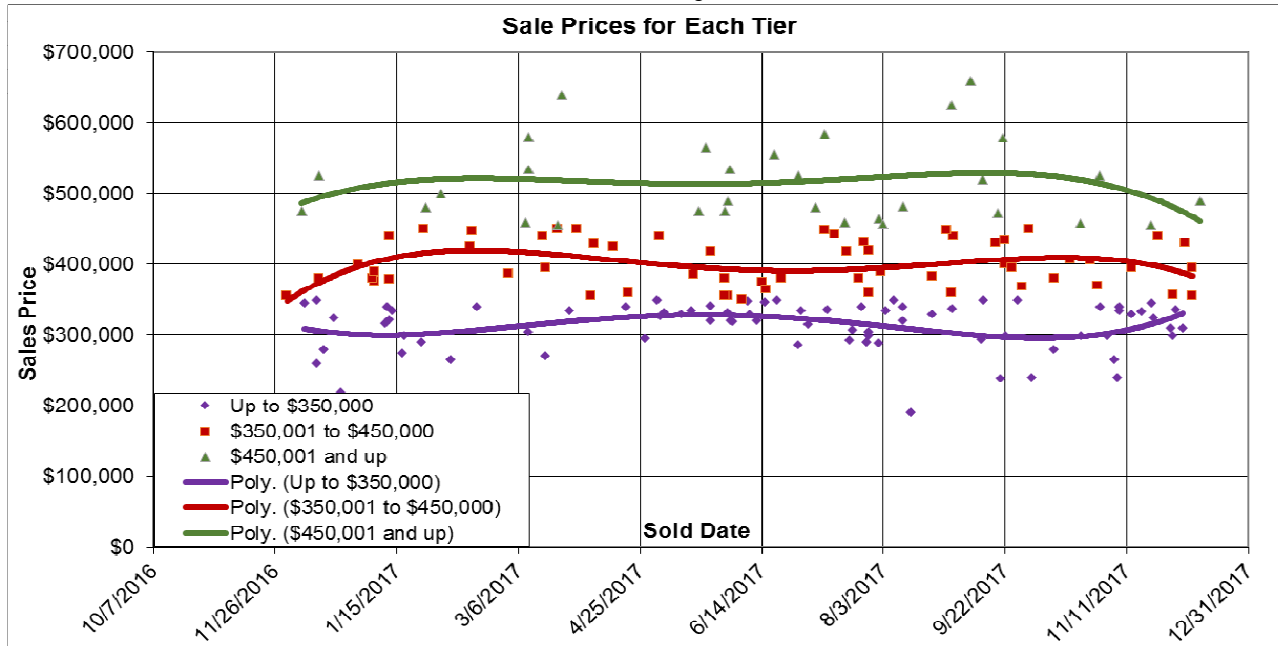


The Past Year in the Alta Sierra Subdivisions, Segmented



Here we look at properties in the Alta Sierra subdivisions. The sale prices are segmented at \$350,000 and \$450,000. More than 45% of the sales are in the lowest segment. 12/13/2017.



Don Machholz | Don's Appraisals

Certified Residential Appraiser

List price appraisals to help set/reset price of house for about \$300.

Other types of appraisals also available

Office: 530.320.8204

Email: donthepraiser@aol.com

Website: donsappraisals.com

Go to my web site for past issues of these handouts