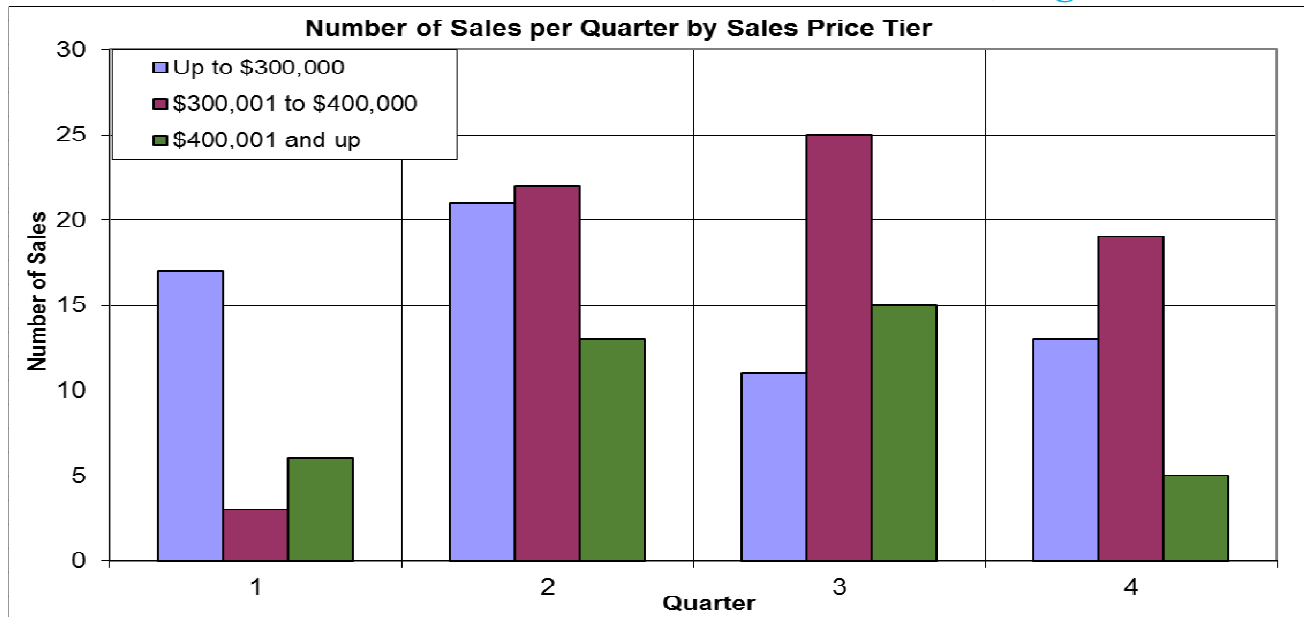
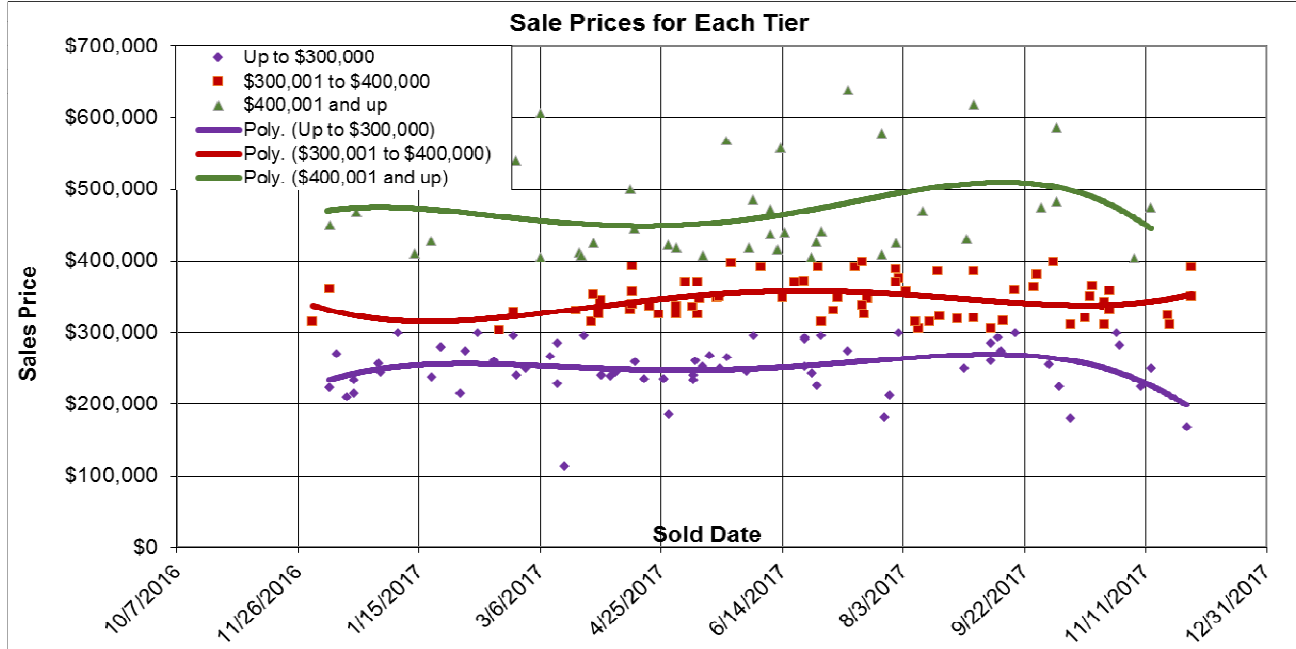


The Past Year in the Lake Wildwood Subdivision, Segmented



Here we look at properties in Lake Wildwood, excluding golf course and lakefront properties. The sale prices are segmented at \$300,000 and \$400,000. More than 40% of the sales are in the middle segment. 12/6/2017.



Don Machholz | Don's Appraisals

Certified Residential Appraiser

List price appraisals to help set/reset price of house for about \$300.

Other types of appraisals also available

Office: 530.320.8204

Email: donthepraiser@aol.com

Website: donsappraisals.com

Go to my web site for past issues of these handouts