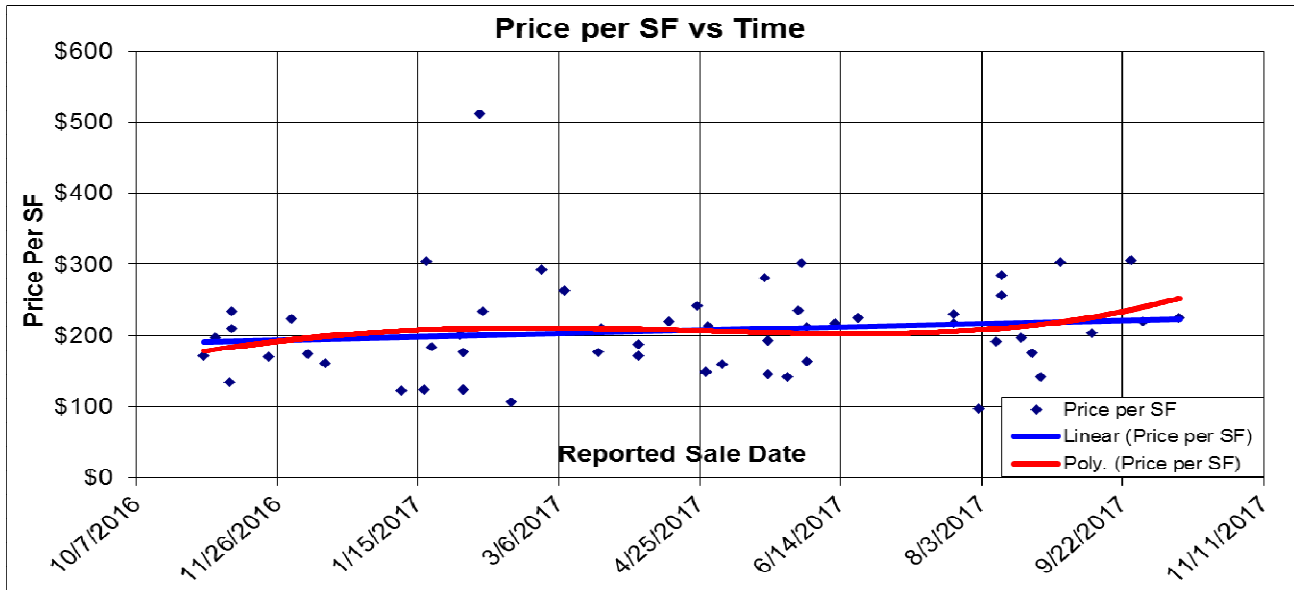
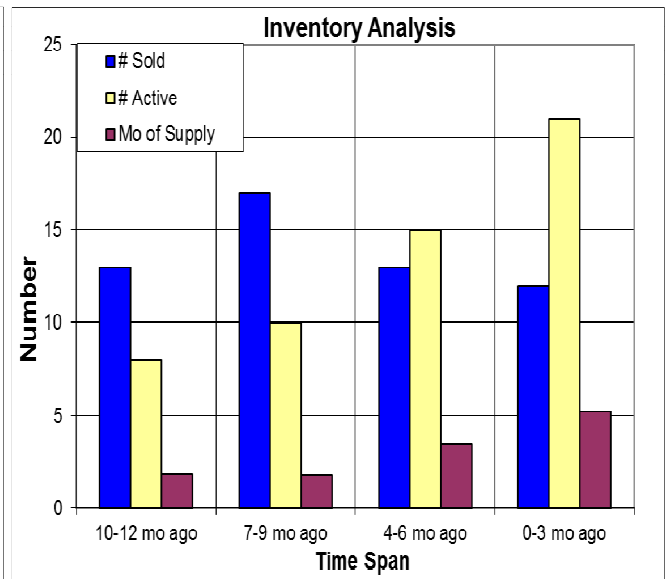
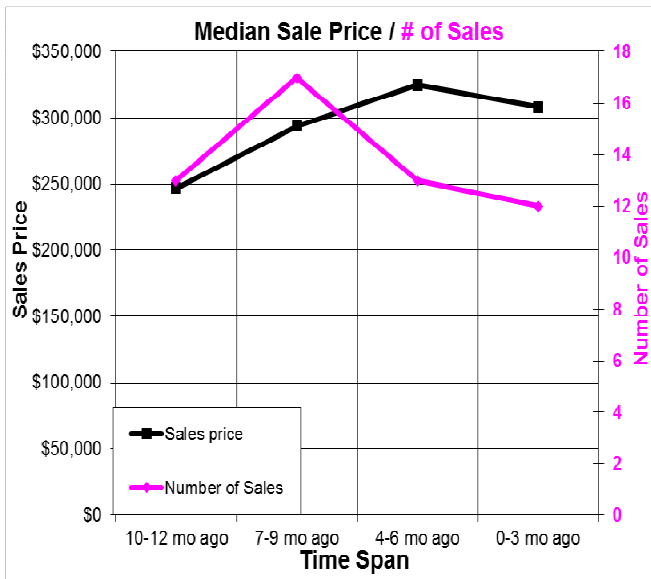


The Past Year for Manufactured Homes in Nevada County



Here we look at manufactured homes in Nevada County for the past year. Above we have the price per SF. Below left we have the median sales price vs the number of sales for each quarter, and below right we have the inventory analysis. 11/01/2017.



Don Machholz | Don's Appraisals

Certified Residential Appraiser

List price appraisals to help set/reset price of house for about \$300.

Other types of appraisals also available

Office: 530.320.8204

Email: donthepraiser@aol.com

Website: donsappraisals.com

Go to my web site for past issues of these handouts