

Seasonal Variations in the Nevada City Area

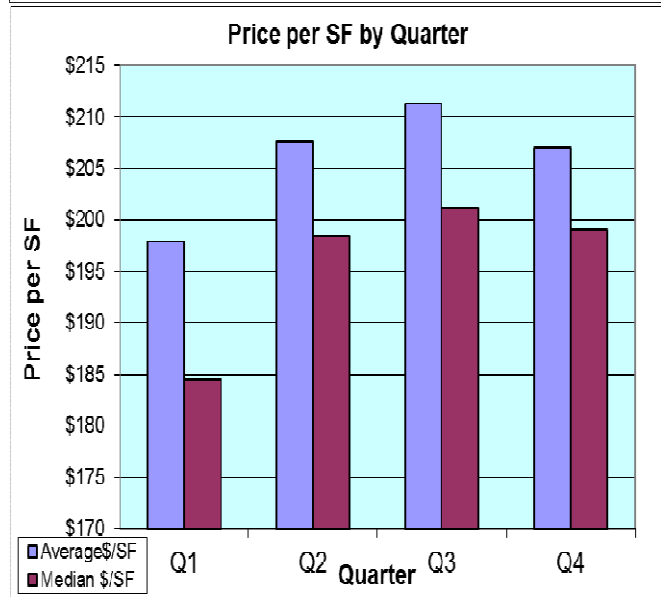
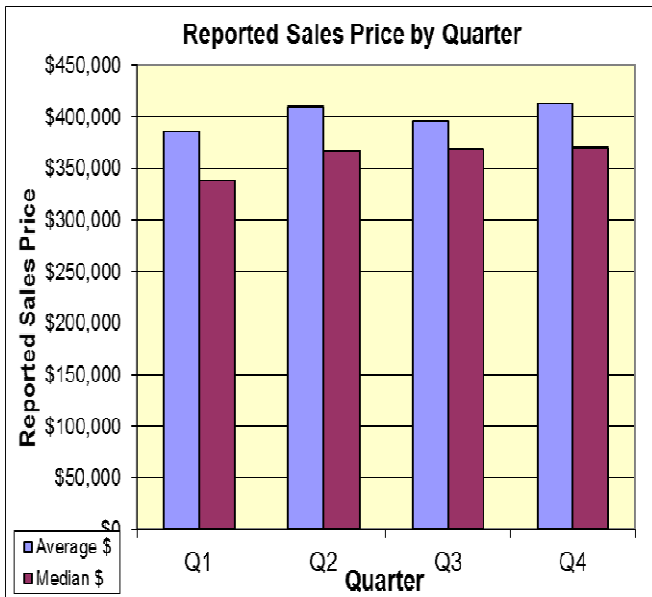
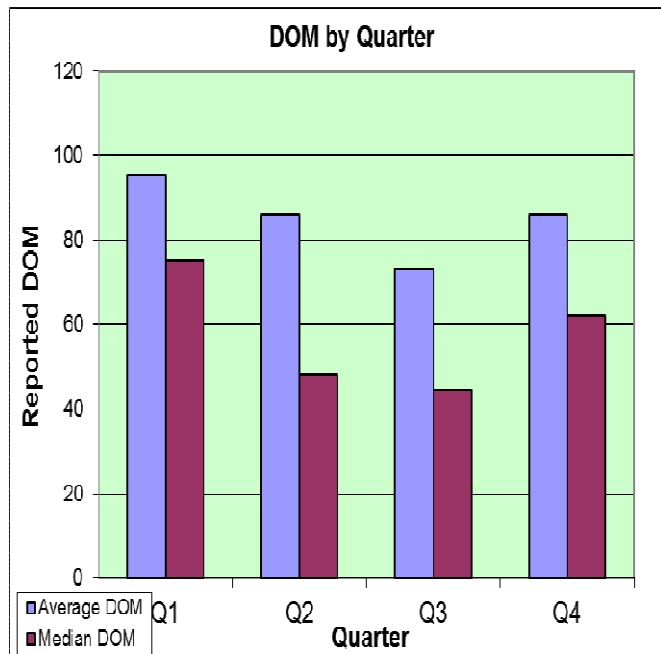
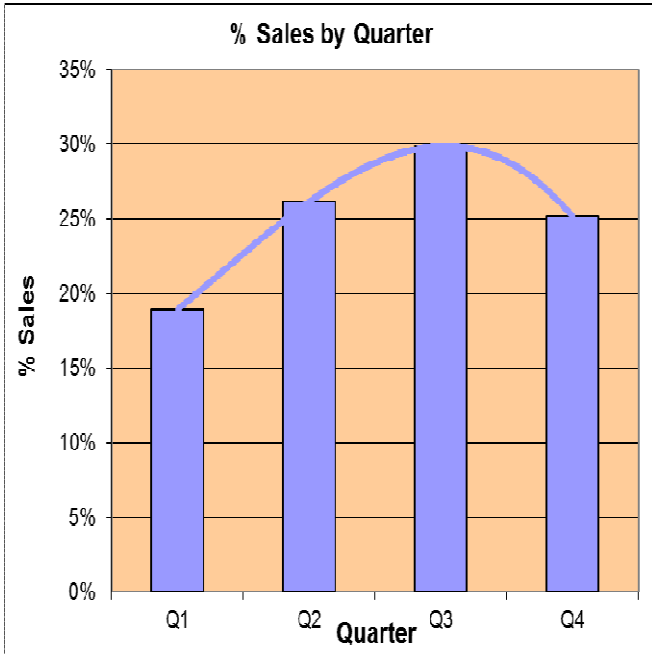
Here we stack 14 years of homes sales in the Nevada City area and sort them by quarters. 01/07/2015

Quarter 1 is January 1 through March 31: Fewest sales, lowest prices and longest DOM.

Quarter 2 is April 1 through June 30: Second highest prices.

Quarter 3 is July 1 through September 30: Largest number of sales, fewest DOM, highest \$/SF.

Quarter 4 is October 1 through December 31: Highest prices.



Don Machholz of Don's Appraisals
Your Professional Appraiser

List price appraisals to help set/reset price of house for about \$250

Other types of appraisals also available. (530) 320-8204

donthepappraiser@aol.com

www.donsappraisals.com

Go to my web site for past issues of these handouts