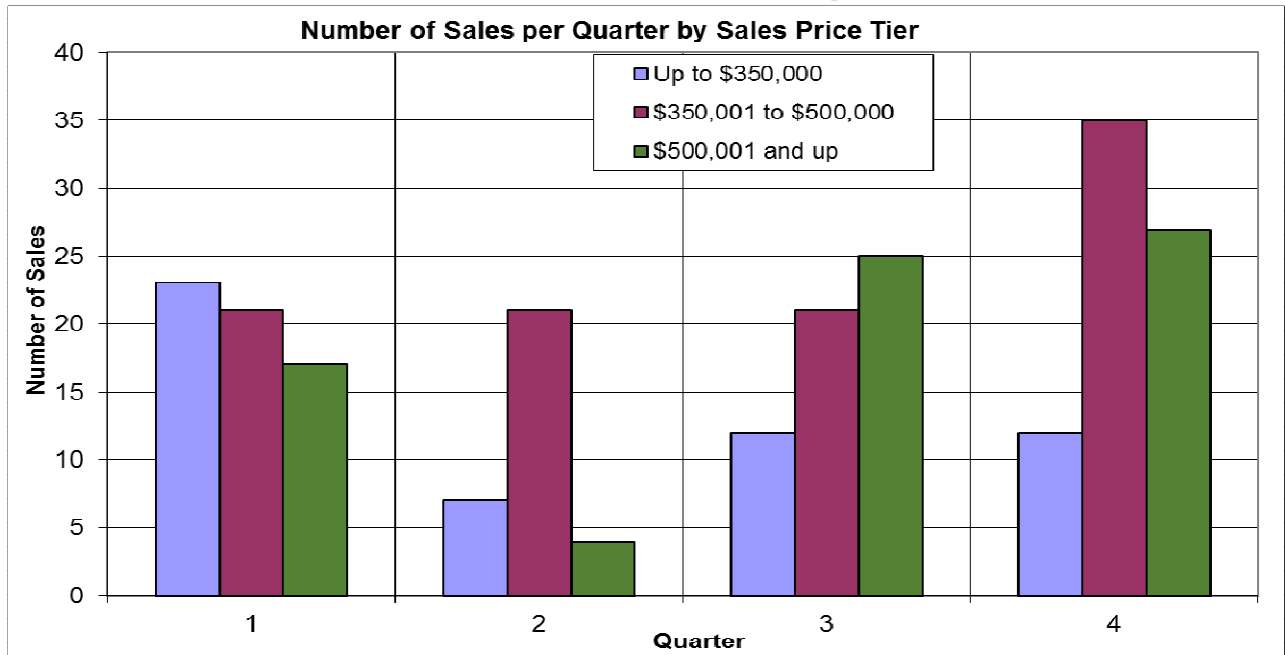
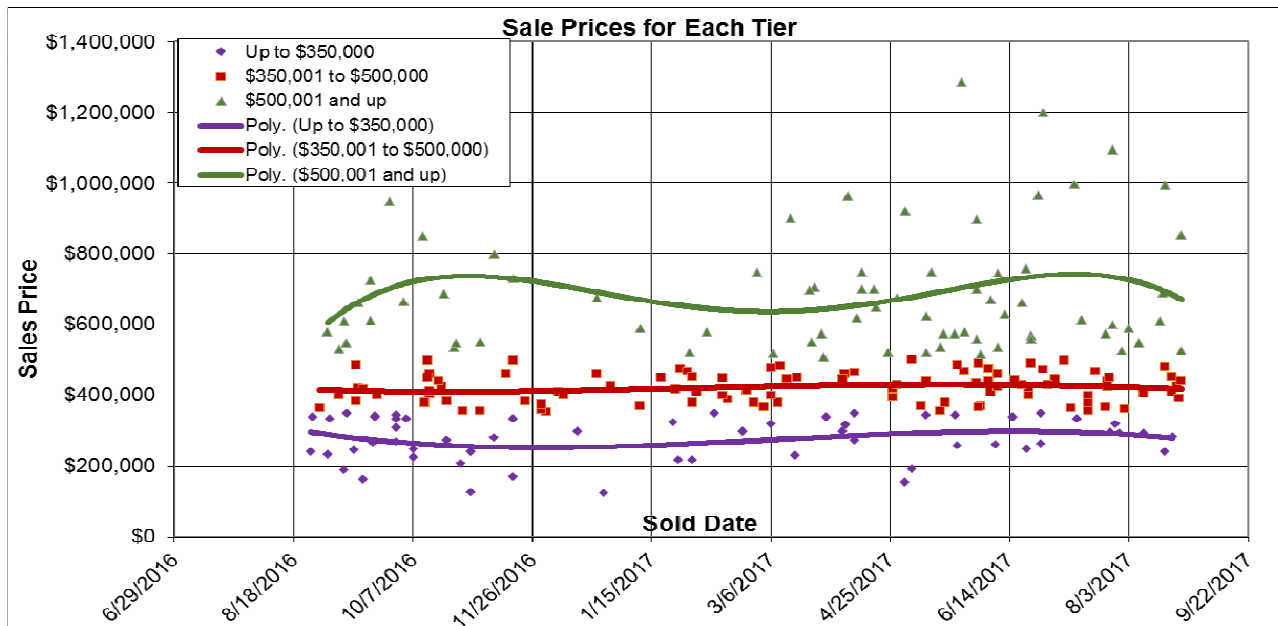


## The Past Year in Area 1, Segmented



Here we look at properties in Area 1 (Nevada City, NSJ, etc.). The sale prices are segmented at \$350,000



and \$500,000. About 32% of the sales are in the high-priced segment. 08/30/2017.



### Don Machholz | Don's Appraisals

Certified Residential Appraiser

List price appraisals to help set/reset price of house for about \$300

Other types of appraisals also available

Office: 530.320.8204

Email: [dontheppraiser@aol.com](mailto:dontheppraiser@aol.com)

Website: [donsappraisals.com](http://donsappraisals.com)

Go to my web site for past issues of these handouts