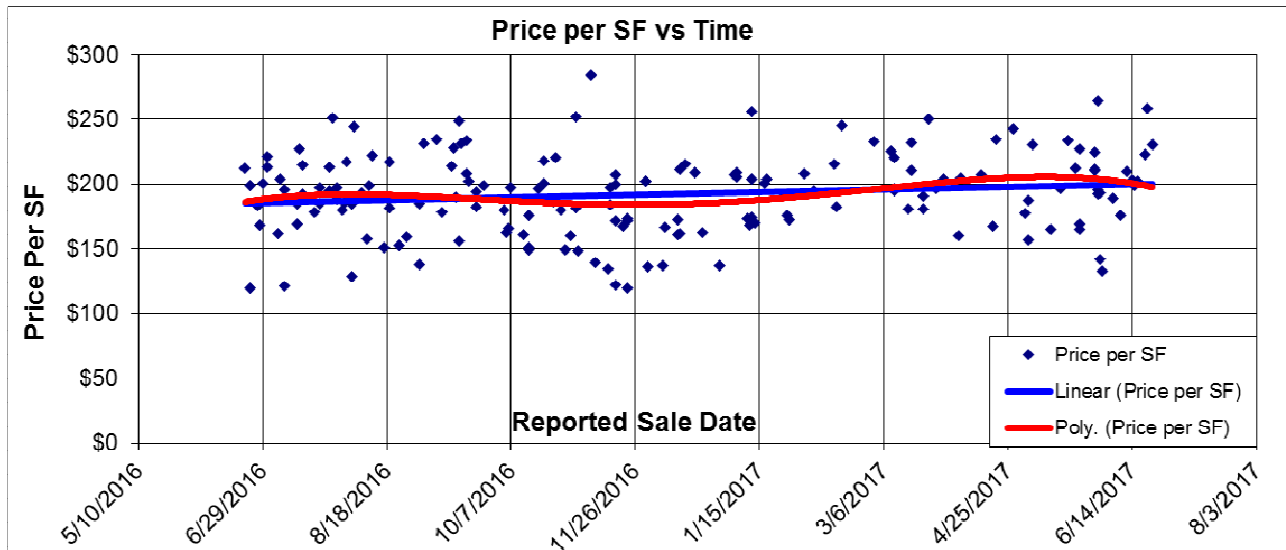
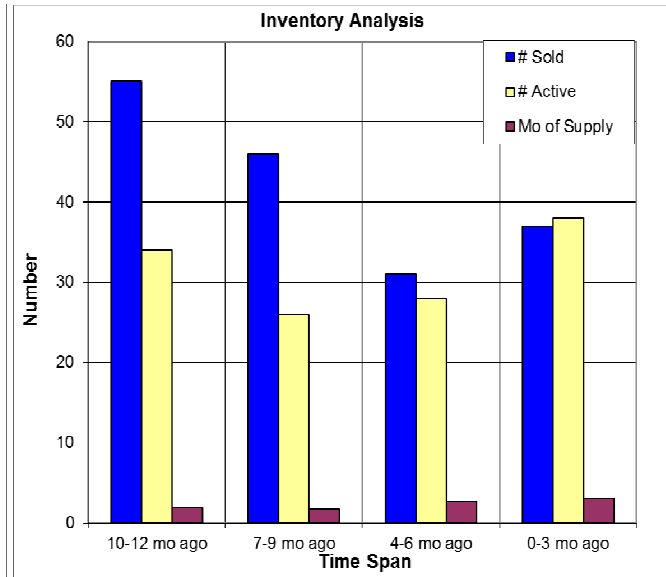
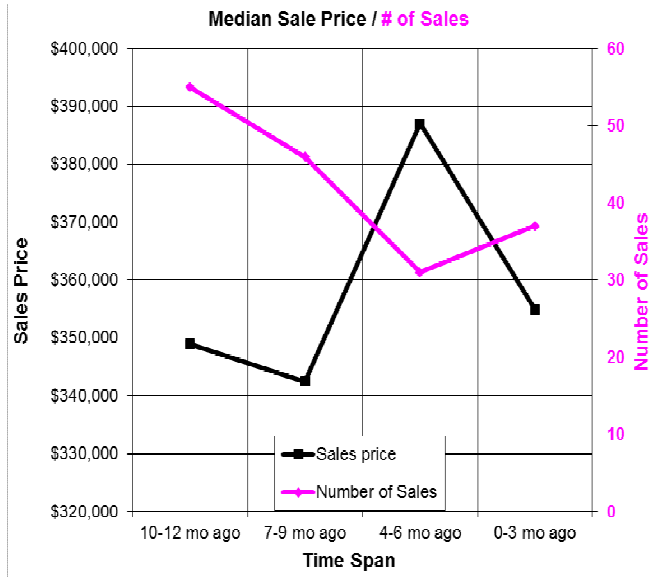


The Past Year in the Alta Sierra Subdivisions



Here we look at properties in the Alta Sierra Subdivisions. The sales price per SF (above) has shown a slight increase and a recent decrease. At below left we have the number of sales and median sales price. At below right we have the number of sales each quarter, number of listings on the last day of each quarter and the resultant inventory in months. We are presently sitting at 3.1 months' inventory and a median of 24 DOM. 06/28/2017.



Don Machholz | Don's Appraisals

Certified Residential Appraiser

List price appraisals to help set/reset price of house for about \$300.

Other types of appraisals also available

Office: 530.320.8204

Email: donthepraiser@aol.com

Website: donsappraisals.com

Go to my web site for past issues of these handouts