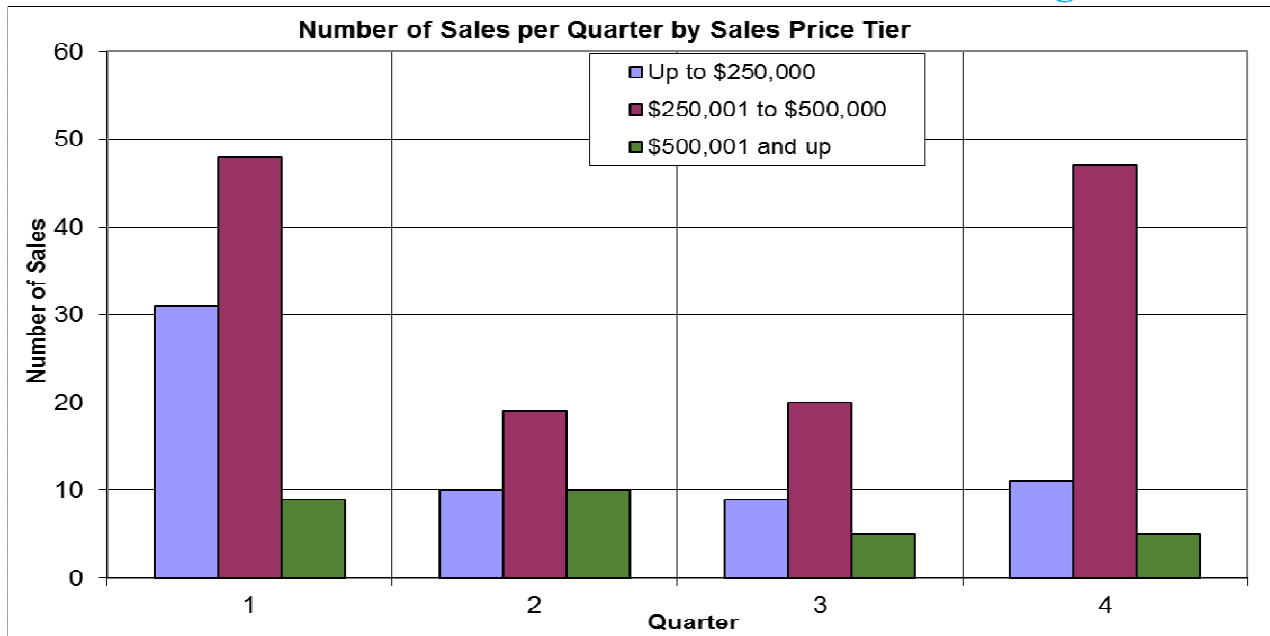
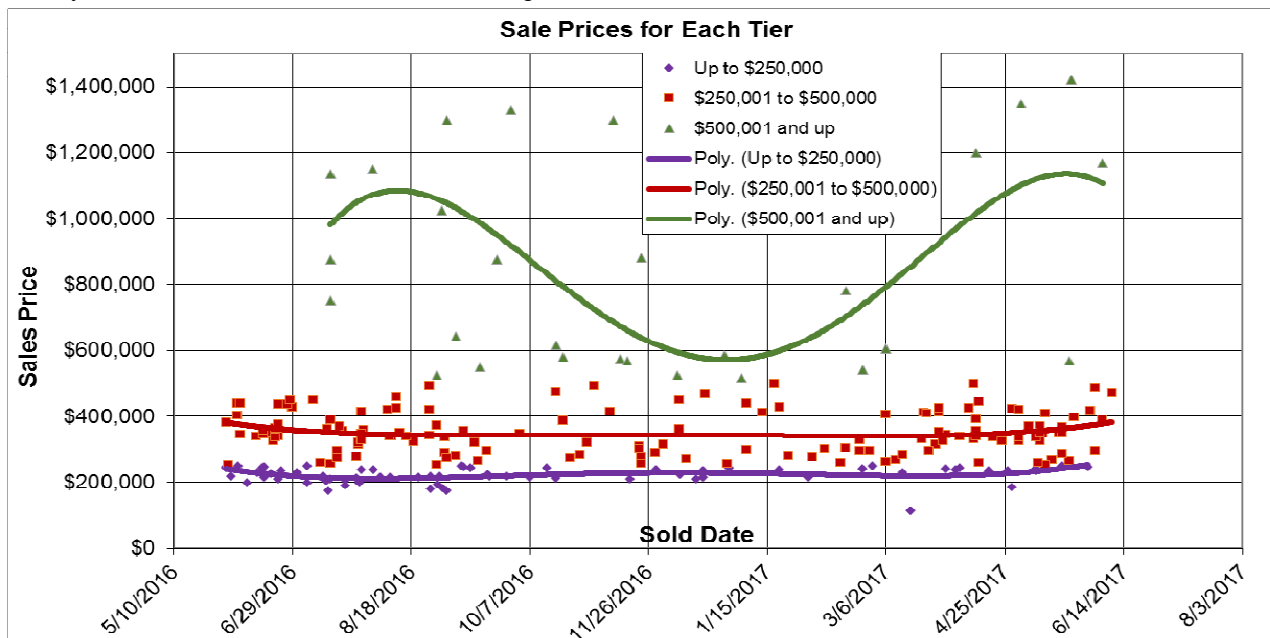


## The Past Year in the Lake Wildwood Subdivision, Segmented



Here we look at properties in Lake Wildwood. The sale prices are segmented at \$250,000 and \$500,000. Nearly 60% of the sales are in the middle segment. 06/14/2017.



### Don Machholz | Don's Appraisals

Certified Residential Appraiser

List price appraisals to help set/reset price of house for about \$300.

Other types of appraisals also available

Office: 530.320.8204

Email: [donthepappraiser@aol.com](mailto:donthepappraiser@aol.com)

Website: [donsappraisals.com](http://donsappraisals.com)

Go to my web site for past issues of these handouts