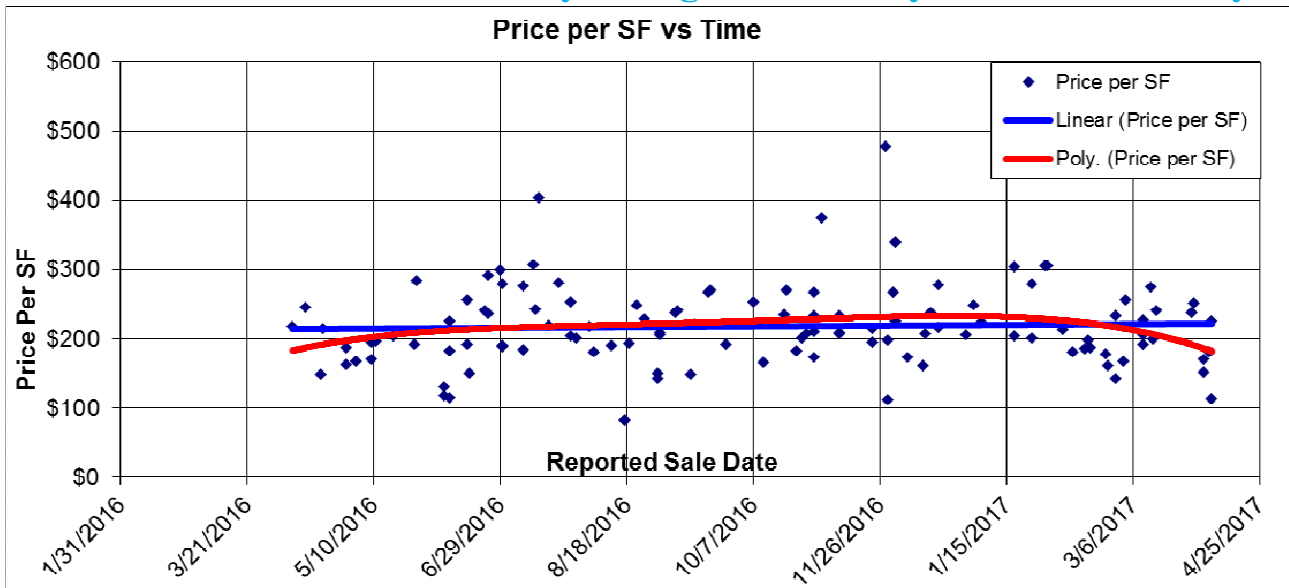
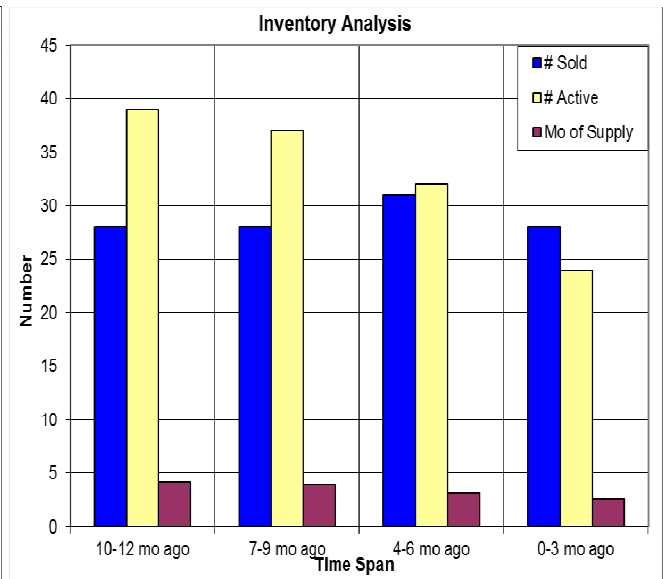
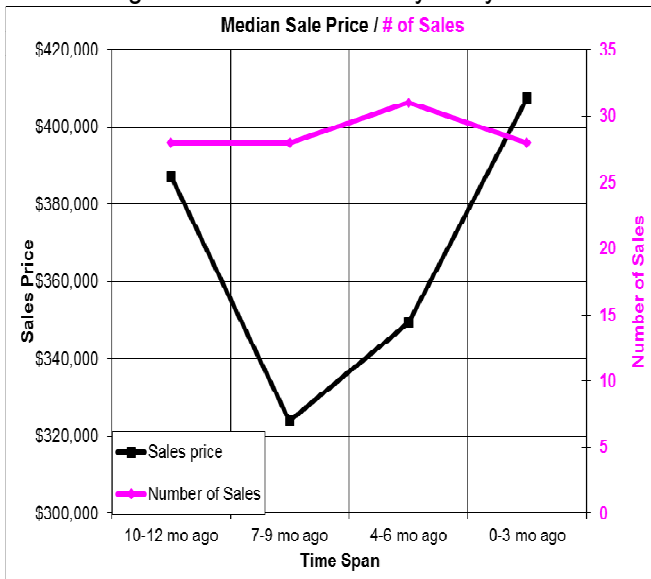


# The Past Year in Penn Valley, Rough and Ready and McCartney



Here we look at properties in Area 2, but not in Lake Wildwood. Therefore, the areas covered are Penn Valley, Rough and Ready, Smartsville, northern McCartney and Big Oak Valley. The price per SF has shown a stable level for the past year. Below we have the median sales price and the number of sales each quarter. At below right we have the inventory analysis. 04/12/17.



## Don Machholz | Don's Appraisals

Certified Residential Appraiser

List price appraisals to help set/reset price of house for about \$275

Other types of appraisals also available

Office: 530.320.8204

Email: [donthappraiser@aol.com](mailto:donthappraiser@aol.com)

Website: [donsappraisals.com](http://donsappraisals.com)

Go to my web site for past issues of these handouts