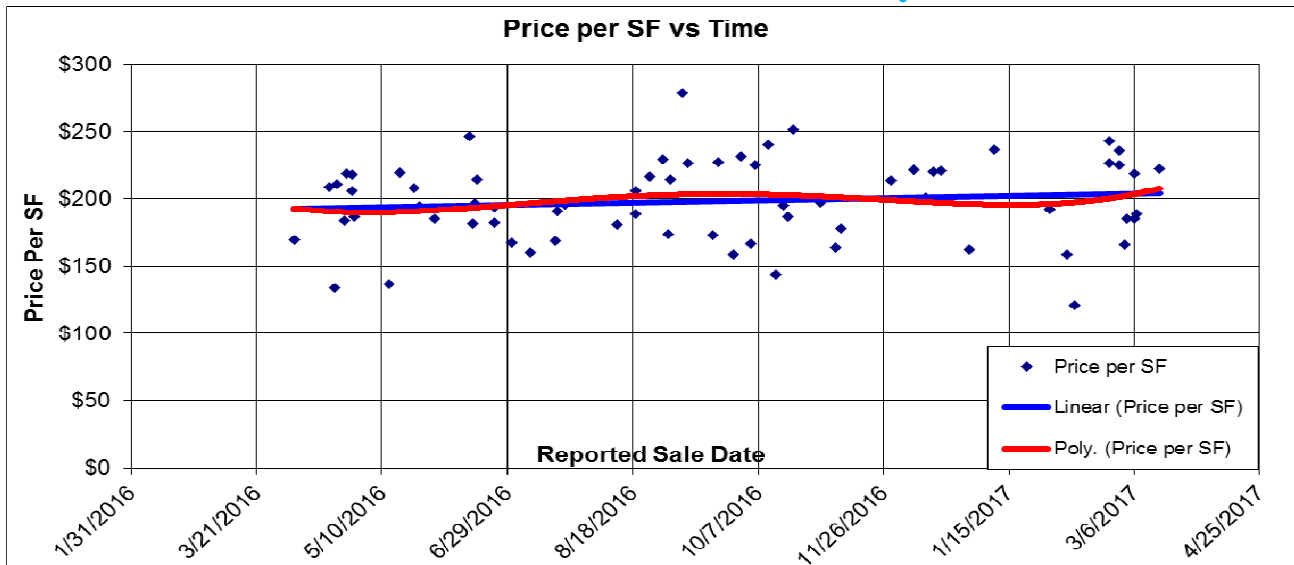
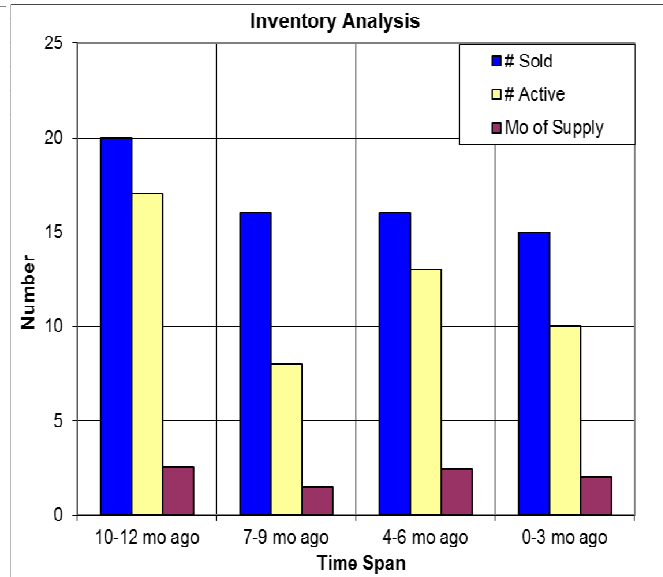
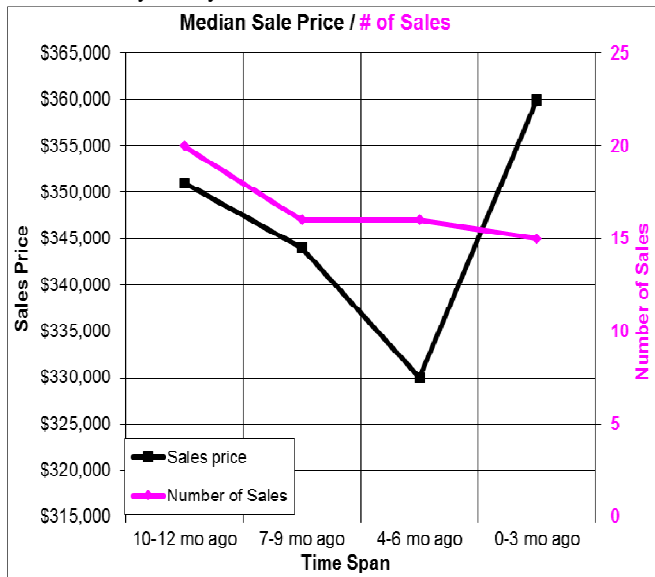


## The Past Year in Todd Valley



Here we look at properties in Todd Valley, a subdivision west of Foresthill. The price per SF has been level for the past 6 months. At below left we compare sales price and the number of sales and at below right we have the inventory analysis. 03/30/2017.



### Don Machholz | Don's Appraisals

Certified Residential Appraiser

List price appraisals to help set/reset price of house for about \$275

Other types of appraisals also available

Office: 530.320.8204

Email: [donthepraiser@aol.com](mailto:donthepraiser@aol.com)

Website: [donsappraisals.com](http://donsappraisals.com)

Go to my web site for past issues of these handouts