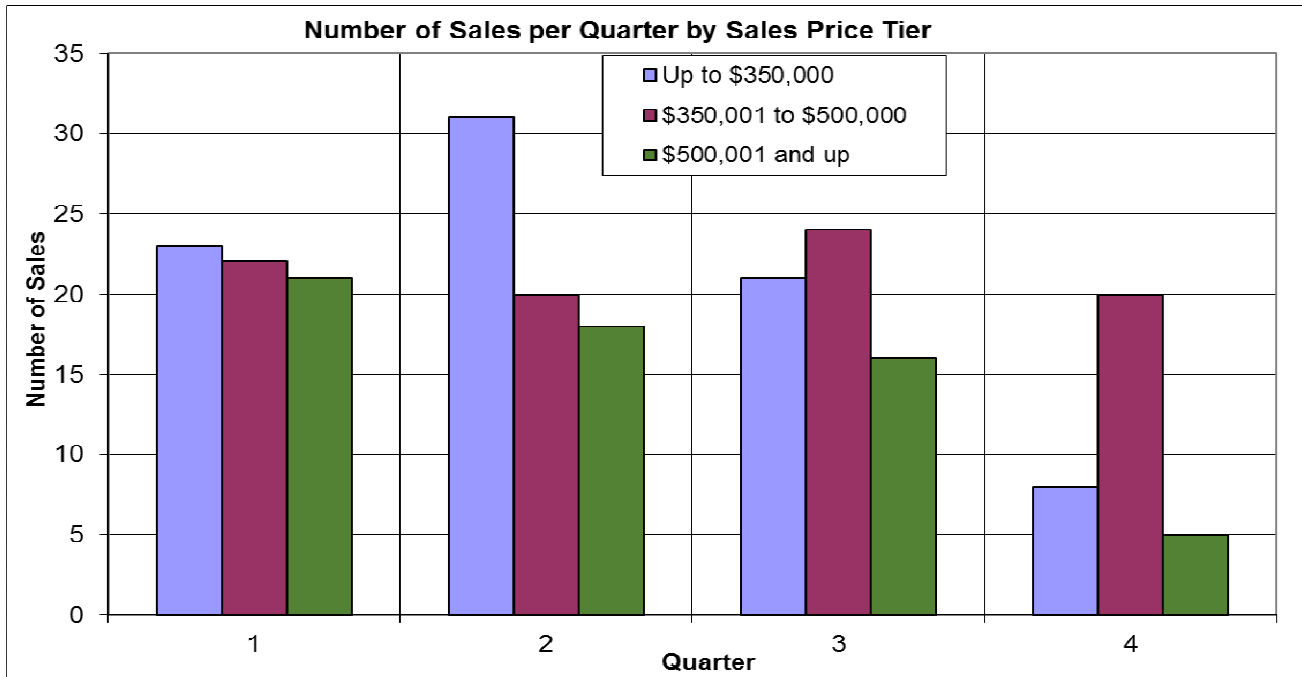
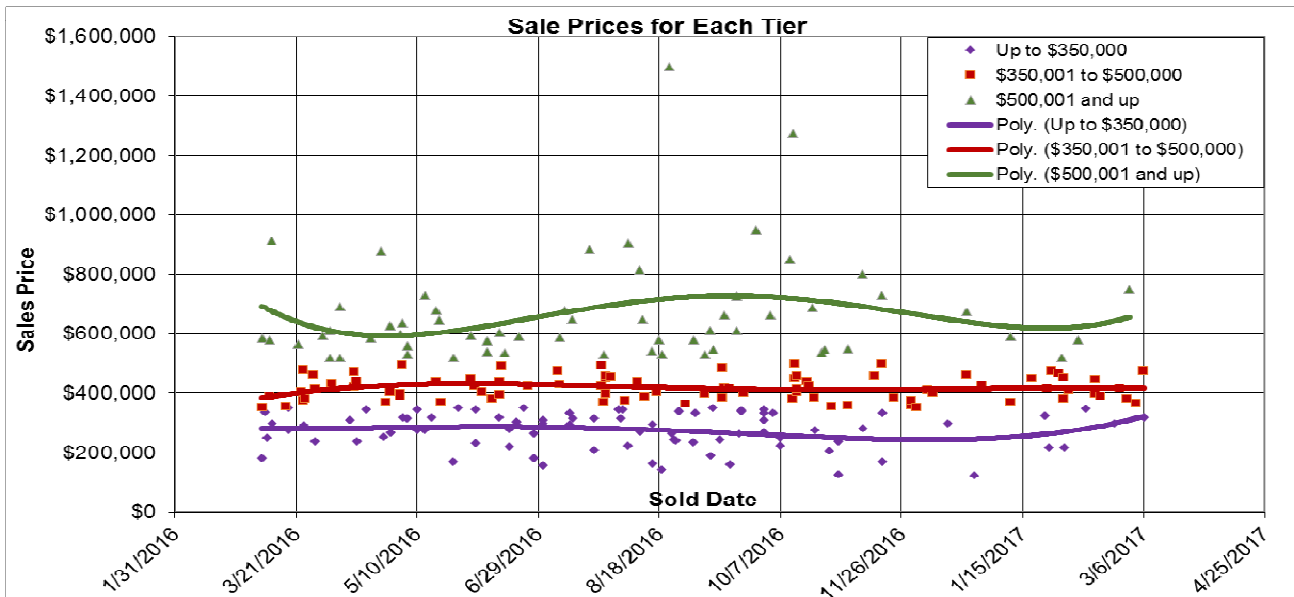


The Past Year in Area 1



Here we look at properties in Area 1 (Nevada City, NSJ, etc.). The sale prices are segmented at \$350,000 and \$500,000. About 25% of the sales are in the high-priced segment. 03/08/2017.



Don Machholz | Don's Appraisals

Certified Residential Appraiser

List price appraisals to help set/reset price of house for about \$275

Other types of appraisals also available

Office: 530.320.8204

Email: donthappraiser@aol.com

Website: donsappraisals.com

Go to my web site for past issues of these handouts