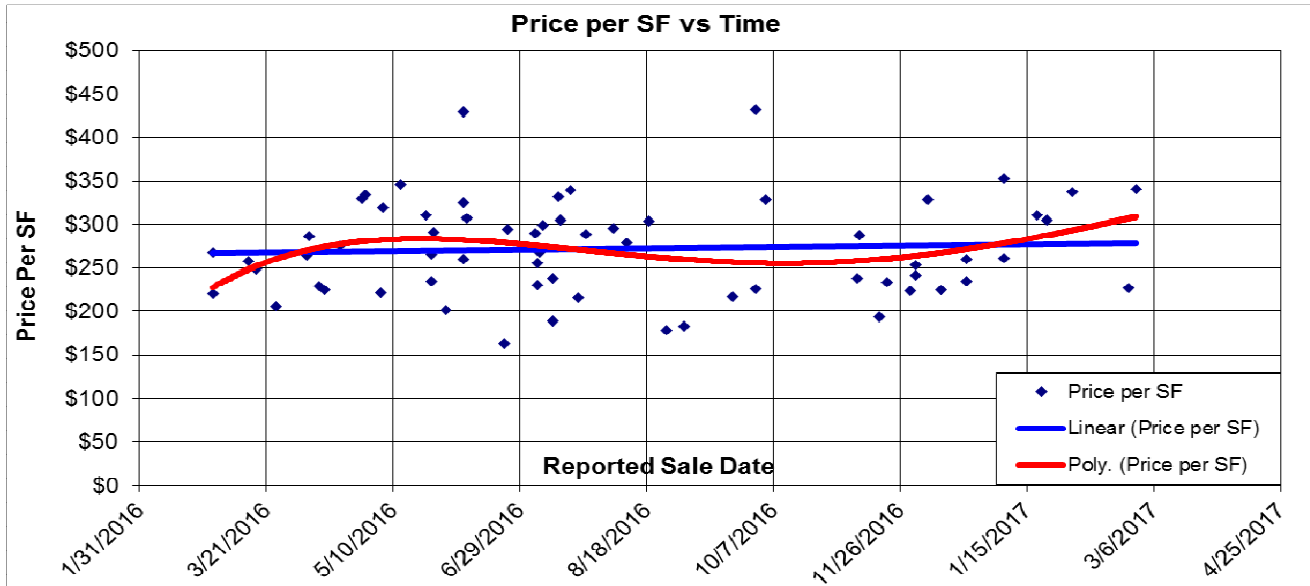
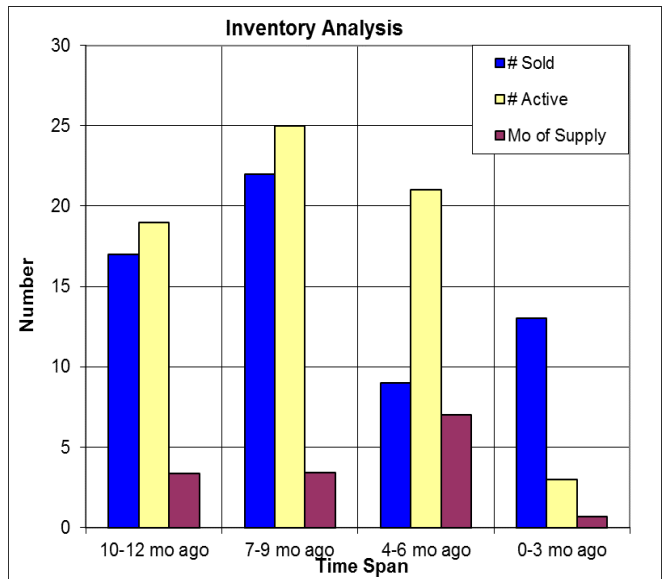
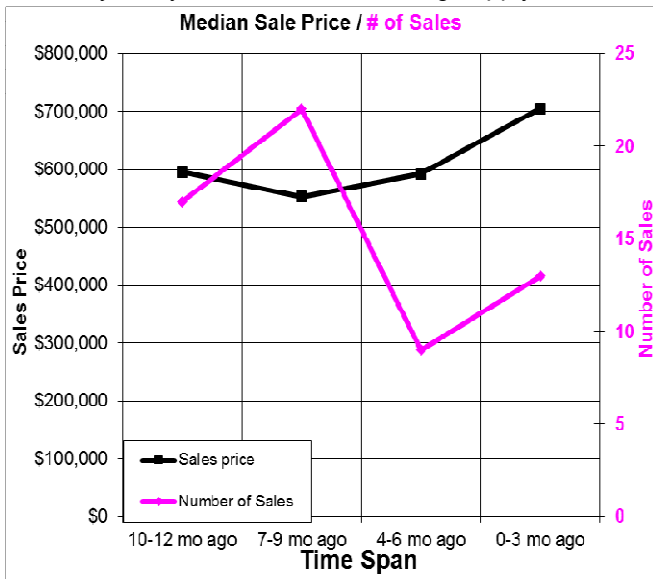


The Past Year in Newcastle



Here we look at properties in Newcastle. The price per SF has increased slightly. At below left we compare the median price and the number of sales for each of the last four quarters. At below right we have the inventory analysis. Months of housing supply is 0.7 months. Median DOM for sales is 39 DOM. 03/01/2017.



Don Machholz | Don's Appraisals

Certified Residential Appraiser

List price appraisals to help set/reset price of house for about \$275

Other types of appraisals also available

Office: 530.320.8204

Email: dontheppraiser@aol.com

Website: donsappraisals.com

Go to my web site for past issues of these handouts