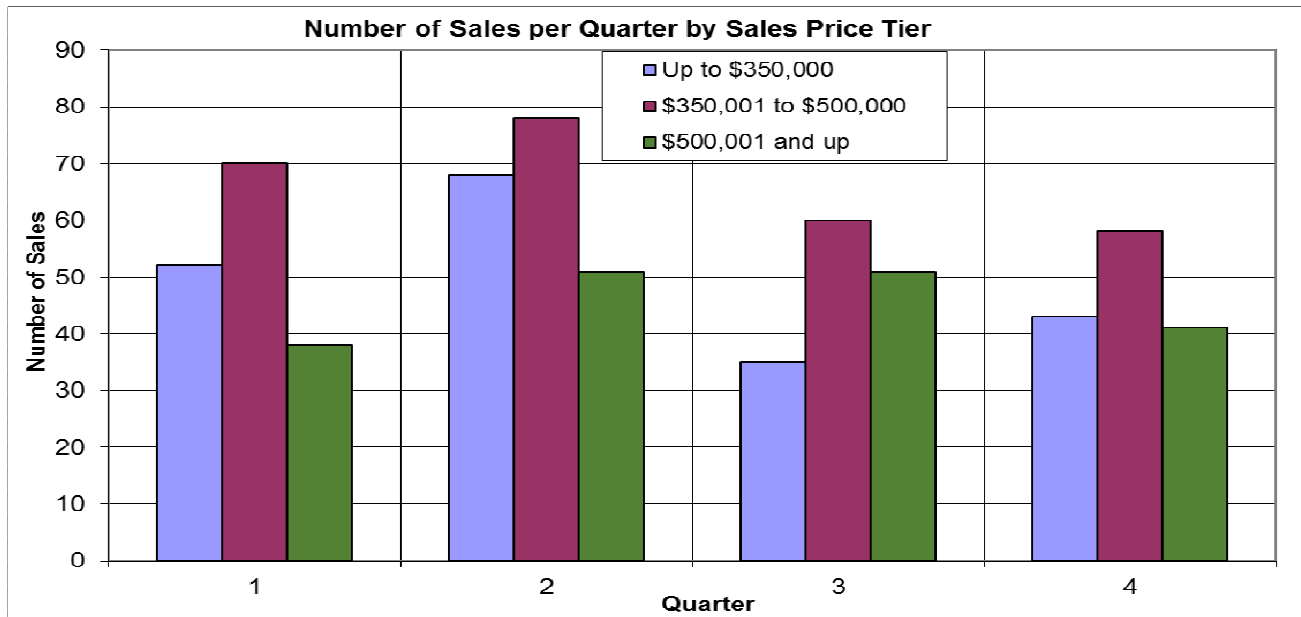
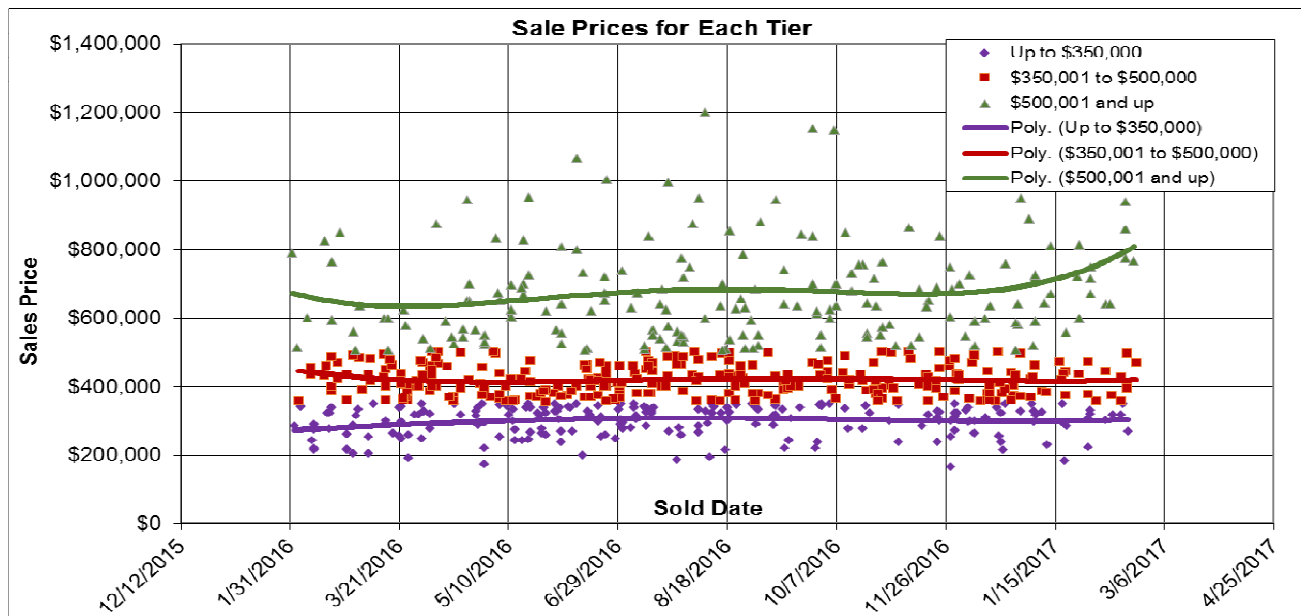


## The Past Year in Auburn



Here we look at properties in Auburn. The sale prices are segmented at \$350,000 and \$500,000. Fully 40% of the sales are in the middle segment. 02/23/2017.



### Don Machholz | Don's Appraisals Certified Residential Appraiser

List price appraisals to help set/reset price of house for about \$275  
Other types of appraisals also available

**Office:** 530.320.8204

**Email:** [donthappraiser@aol.com](mailto:donthappraiser@aol.com)

**Website:** [donsappraisals.com](http://donsappraisals.com)

Go to my web site for past issues of these handouts