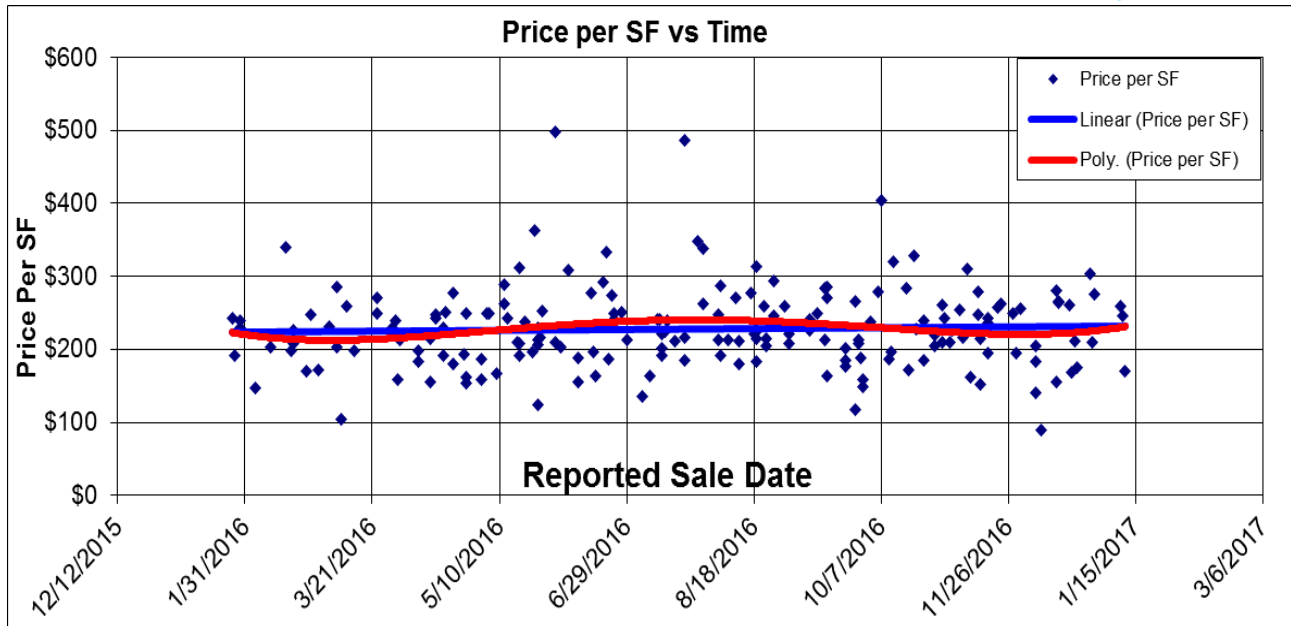
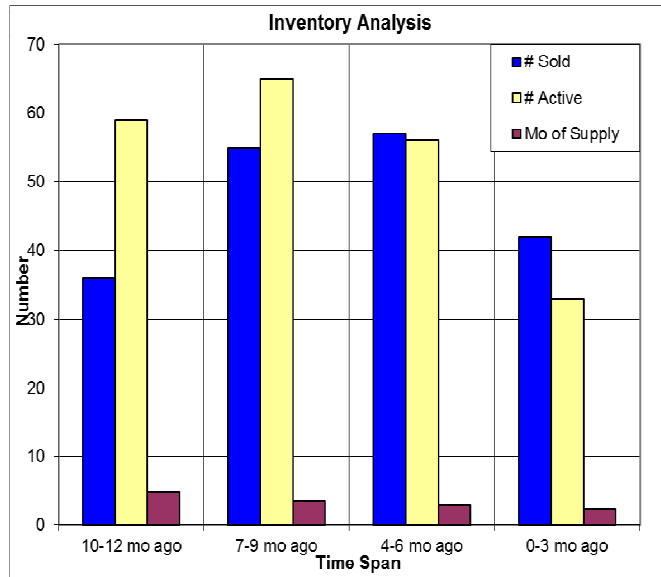
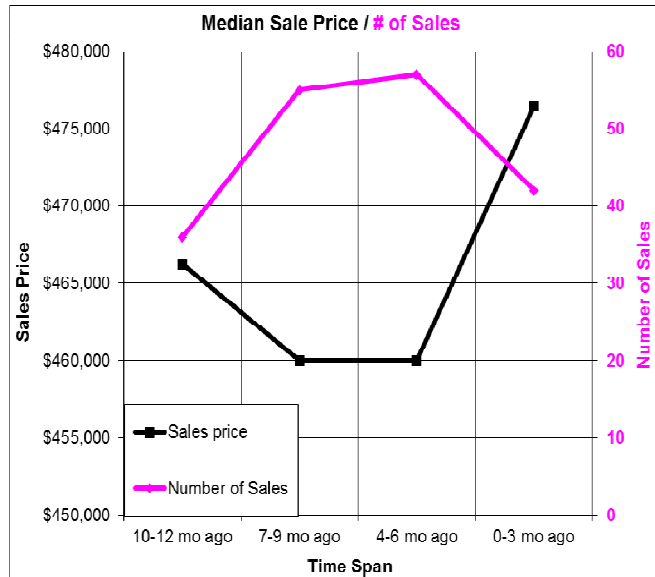


## The Past Year in Meadow Vista and Christian Valley



Here we look at properties in Christian Valley and Meadow Vista. The price per SF has increased slightly. Below left we have the median sale price and number of sales for each quarter and at below right we have the inventory analysis. 01/26/2017.



### Don Machholz | Don's Appraisals

Certified Residential Appraiser

List price appraisals to help set/reset price of house for about \$275

Other types of appraisals also available

Office: 530.320.8204

Email: [dontheppraiser@aol.com](mailto:dontheppraiser@aol.com)

Website: [donsappraisals.com](http://donsappraisals.com)

Go to my web site for past issues of these handouts