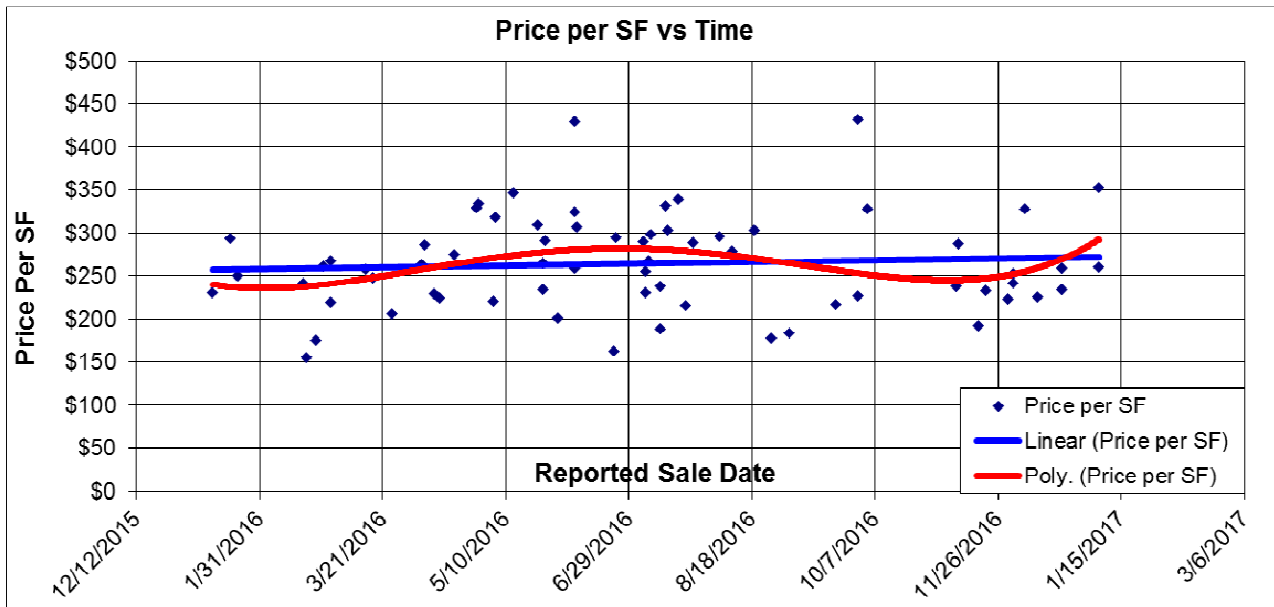
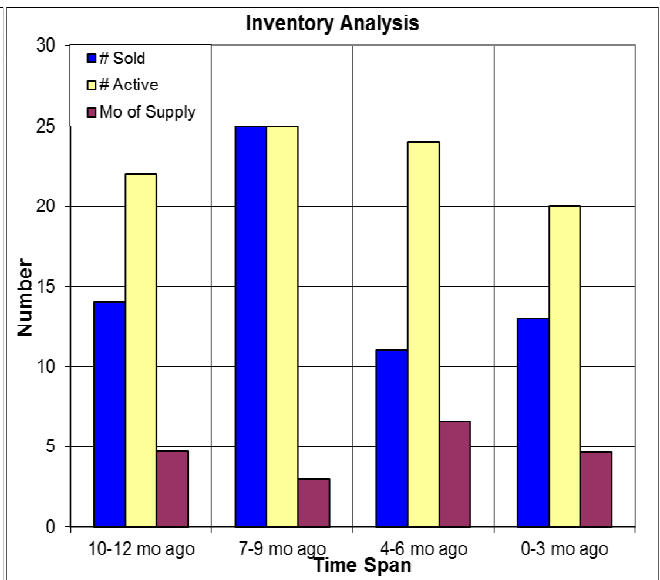
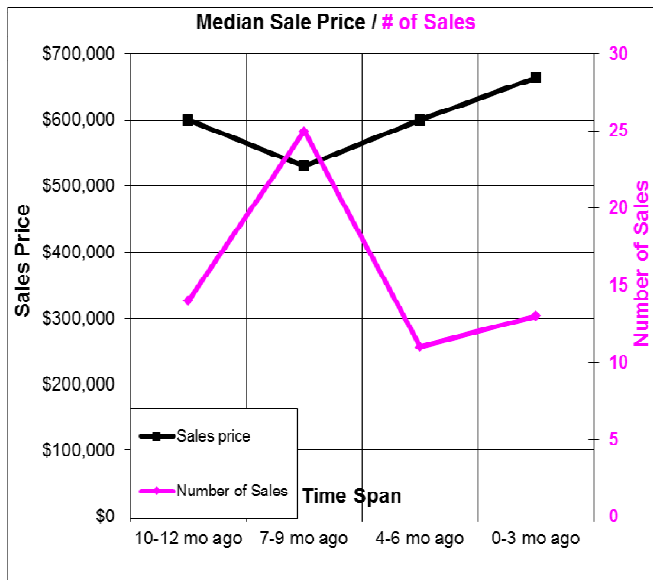


The Past Year in Newcastle



Here we look at properties in Newcastle. The price per SF has increased slightly. At below left we compare sales price and the number of sales and at below right we have the inventory analysis. Presently those homes that sell have a median DOM of 39 days. 01/19/2017.



Don Machholz | Don's Appraisals

Certified Residential Appraiser

List price appraisals to help set/reset price of house for about \$275

Other types of appraisals also available

Office: 530.320.8204

Email: donthappraiser@aol.com

Website: donsappraisals.com

Go to my web site for past issues of these handouts