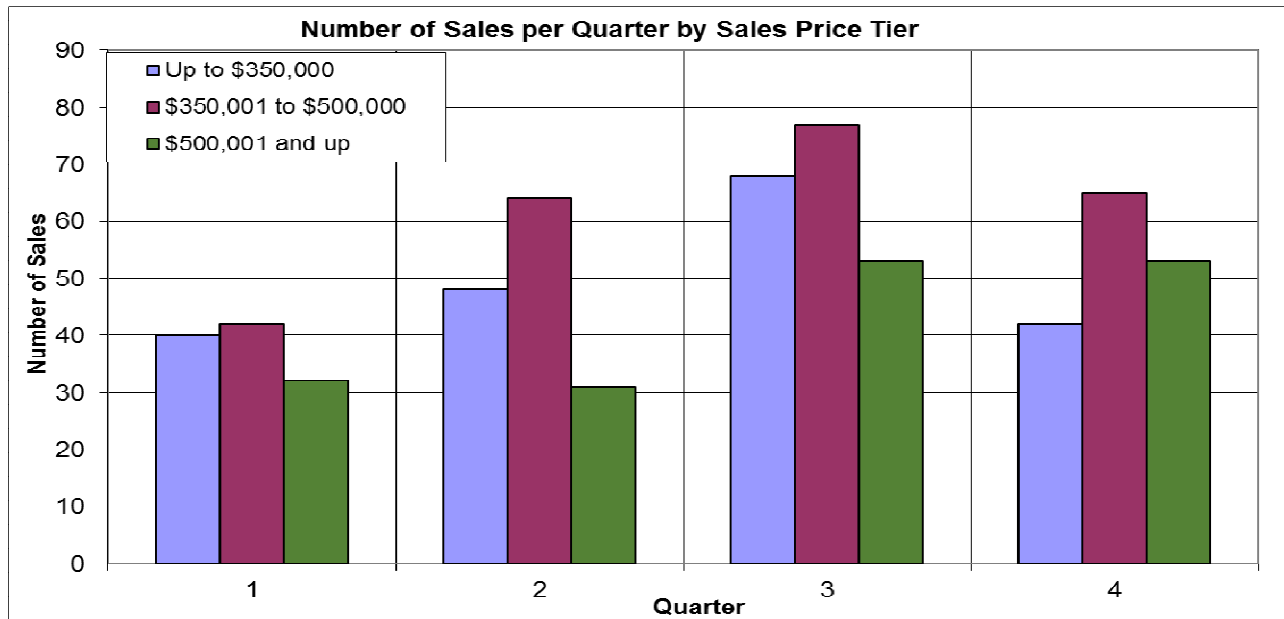
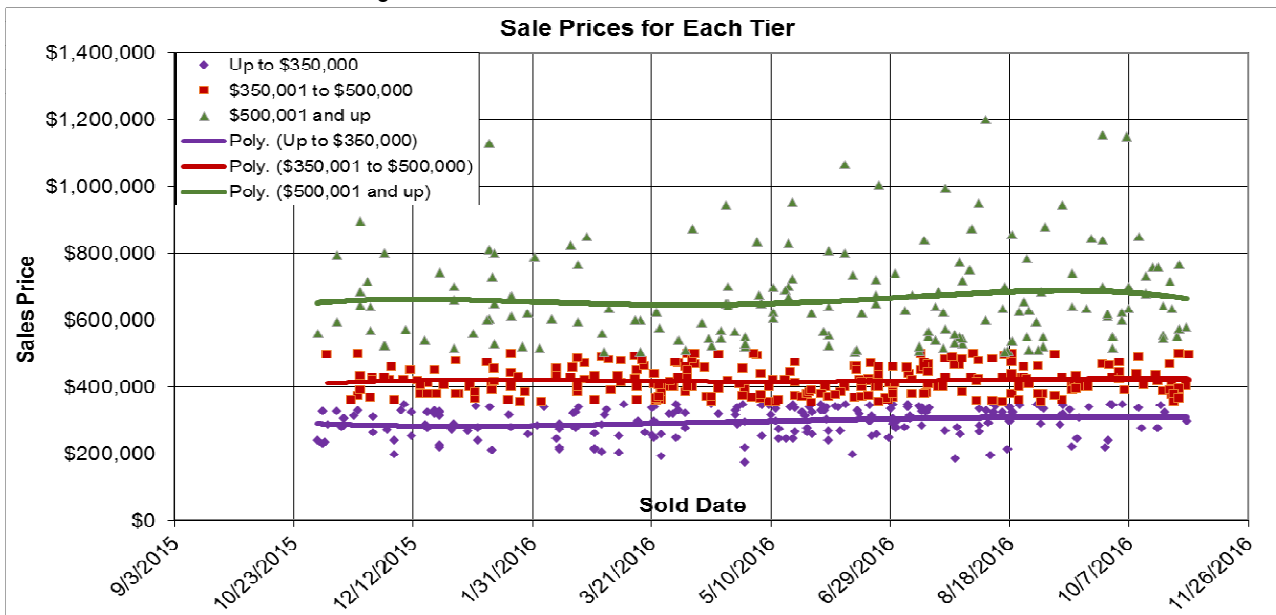


The Past Year in the Auburn Area



Here we look at properties in Auburn. The sale prices are segmented at \$350,000 and \$500,000. Fully 40% of the sales are in the middle segment. 11/03/2016.



Don Machholz | Don's Appraisals

Certified Residential Appraiser

List price appraisals to help set/reset price of house for about \$275

Other types of appraisals also available

Office: 530.320.8204

Email: donthepraiser@aol.com

Website: donsappraisals.com

Go to my web site for past issues of these handouts