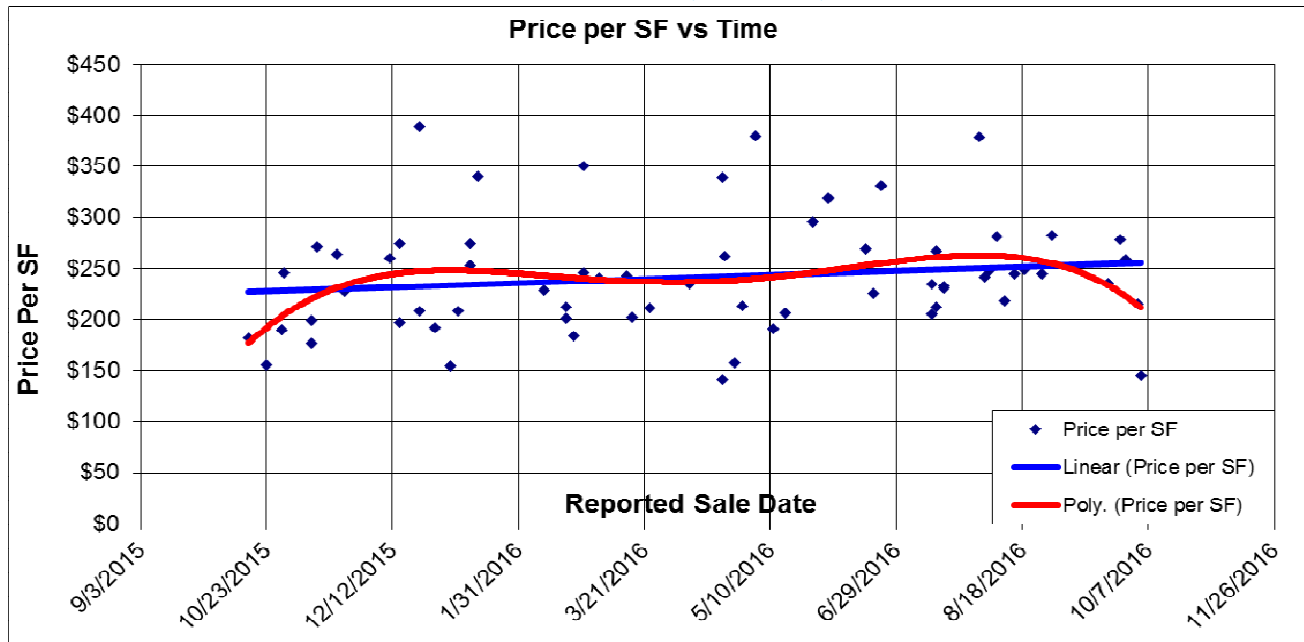
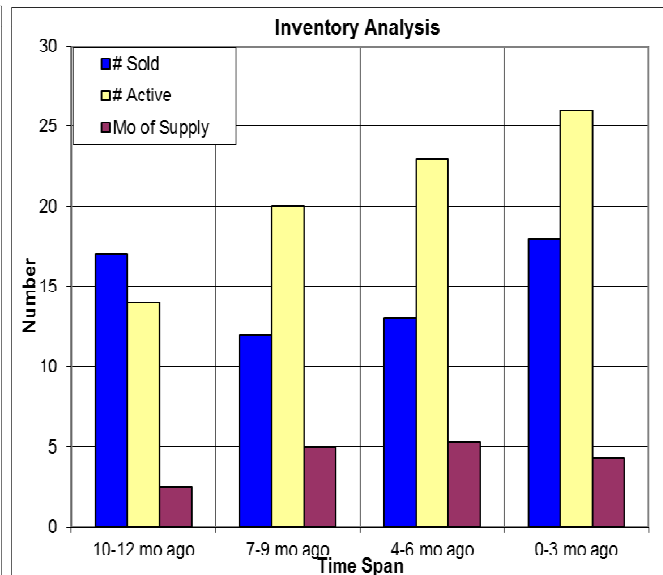
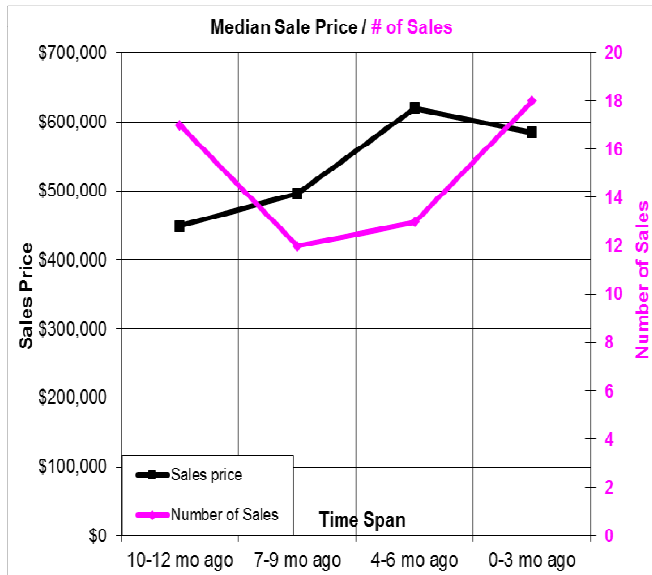


The Past Year in Areas 12306, 12307, S and W Auburn



Here we look at properties in S and W Auburn. The price per SF increased slightly over the past year. At below left we have the median price each quarter, with the number of sales. At below right we have the inventory analysis. DOM has increased in the past quarter from 24 days to 47 days. 10/13/2016.



Don Machholz | Don's Appraisals

Certified Residential Appraiser

List price appraisals to help set/reset price of house for about \$275

Other types of appraisals also available

Office: 530.320.8204

Email: donthappraiser@aol.com

Website: donsappraisals.com

Go to my web site for past issues of these handouts