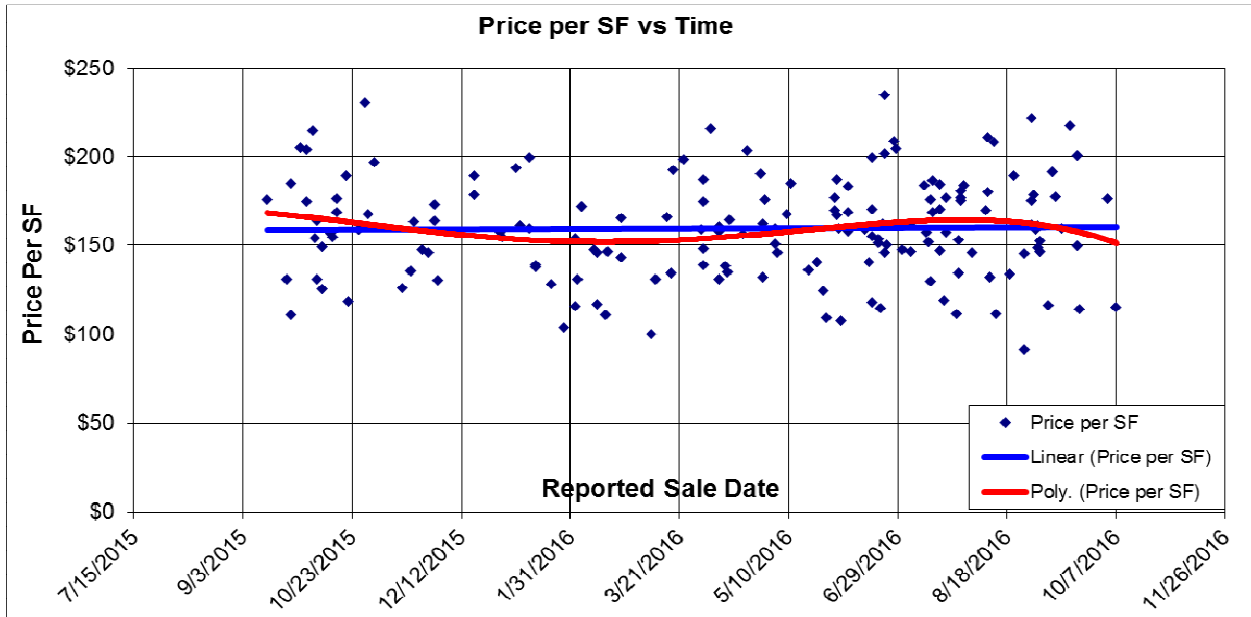
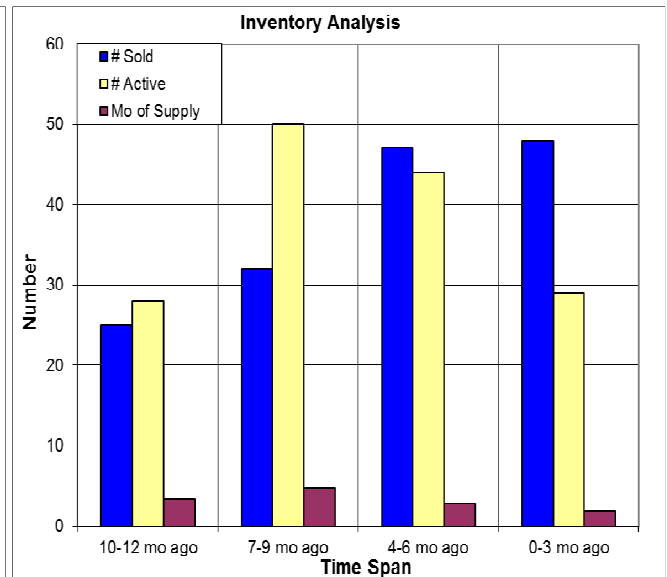
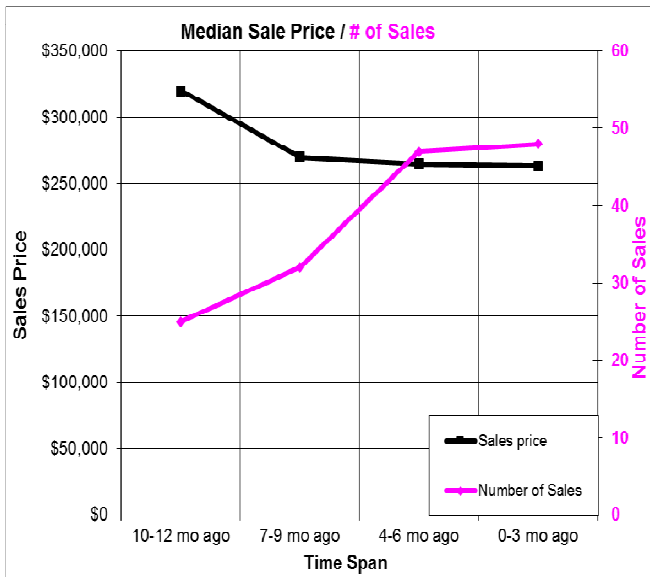


## The Past Year in the Lake Wildwood Subdivision



Here we look at properties in the gated Lake Wildwood subdivision, not including lakefront and golf course properties. The price per SF has been stable but the SF of homes sold has decreased from 2200 SF to 1800 SF. Below left we have sale price vs number of sales for each quarter and at below right we have inventory analysis. 10/12/2016.



### Don Machholz | Don's Appraisals

Certified Residential Appraiser

List price appraisals to help set/reset price of house for about \$275

Other types of appraisals also available

Office: 530.320.8204

Email: [donthepraiser@aol.com](mailto:donthepraiser@aol.com)

Website: [donsappraisals.com](http://donsappraisals.com)

Go to my web site for past issues of these handouts