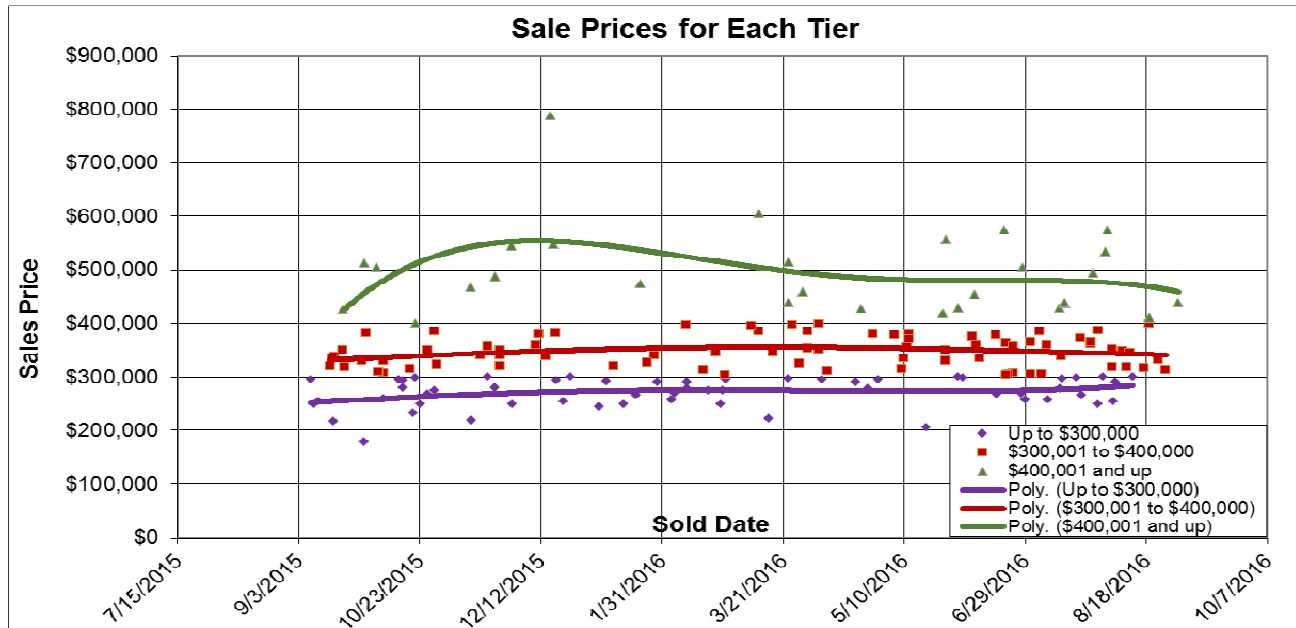
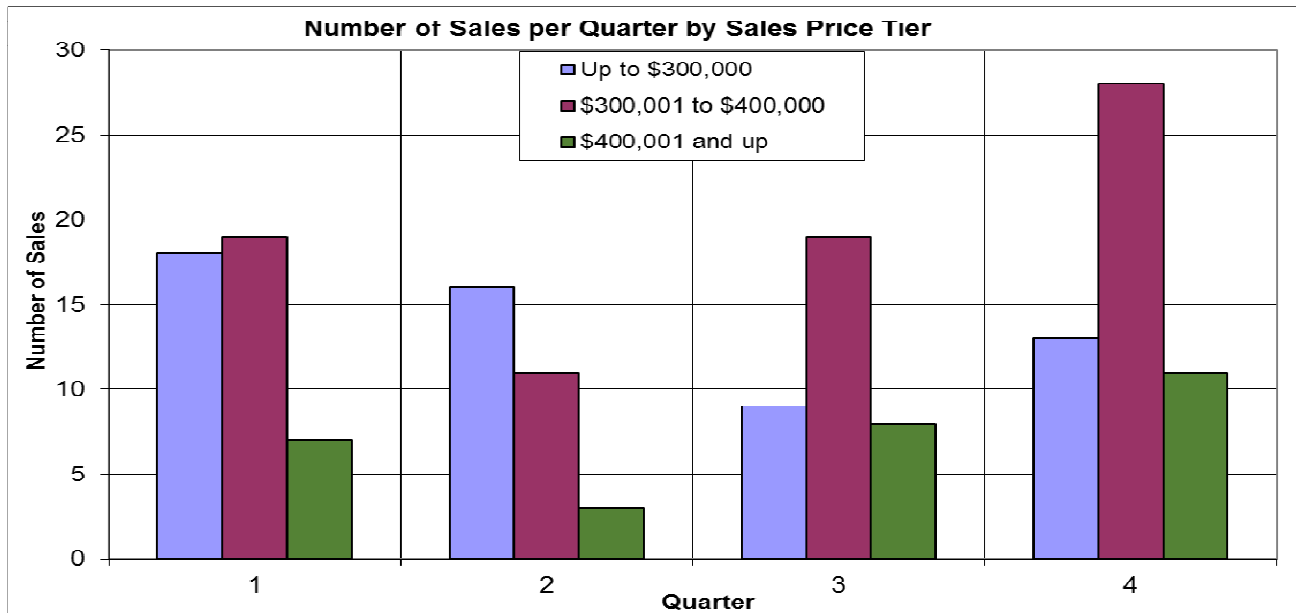


The Past Year in the Alta Sierra Subdivisions



Here we look at properties in the Alta Sierra Subdivisions. The sales price (above) and the number of sales (below) are at sale price segments with brackets at \$300,000 and \$400,000. Nearly 50% of the homes sold in the middle range (\$300,000 to \$400,000). 09/07/2016.



Don Machholz | Don's Appraisals

Certified Residential Appraiser

List price appraisals to help set/reset price of house for about \$275

Other types of appraisals also available

Office: 530.320.8204

Email: dontheppraiser@aol.com

Website: donsappraisals.com

Go to my web site for past issues of these handouts