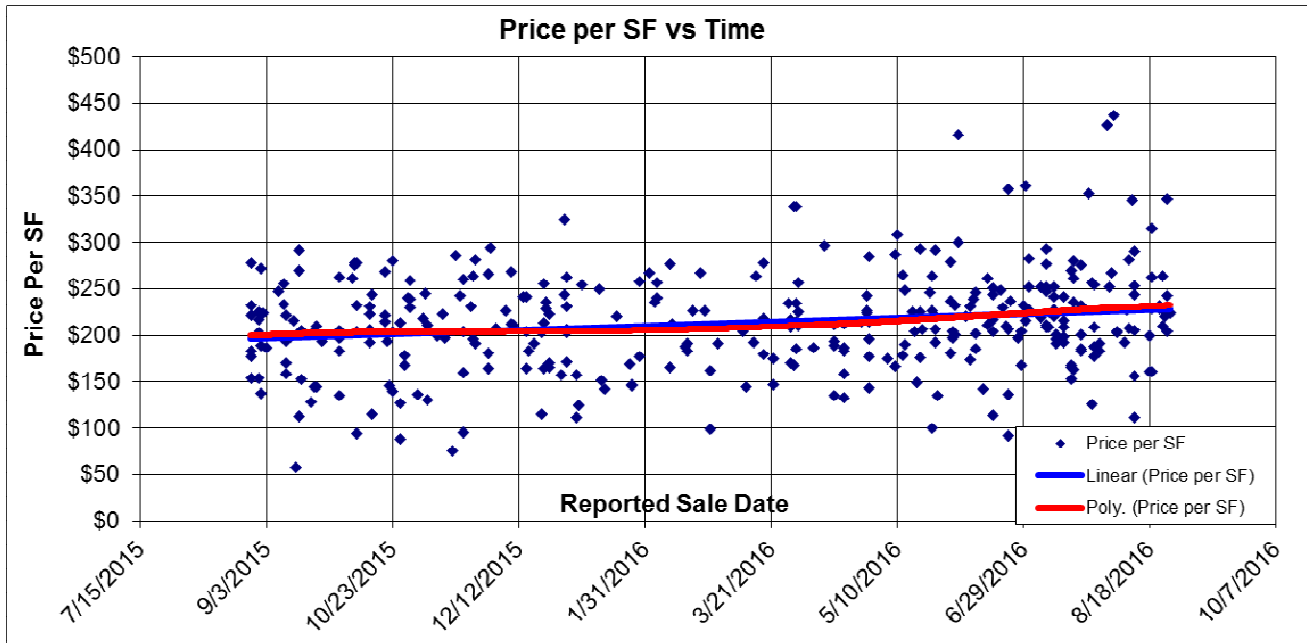
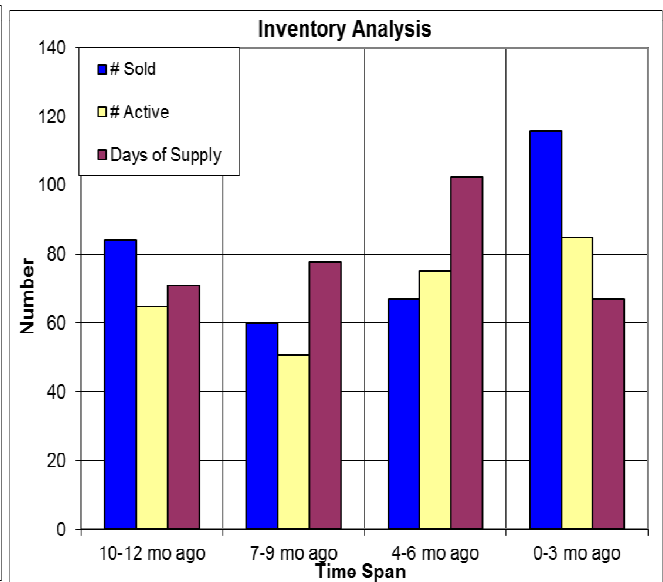
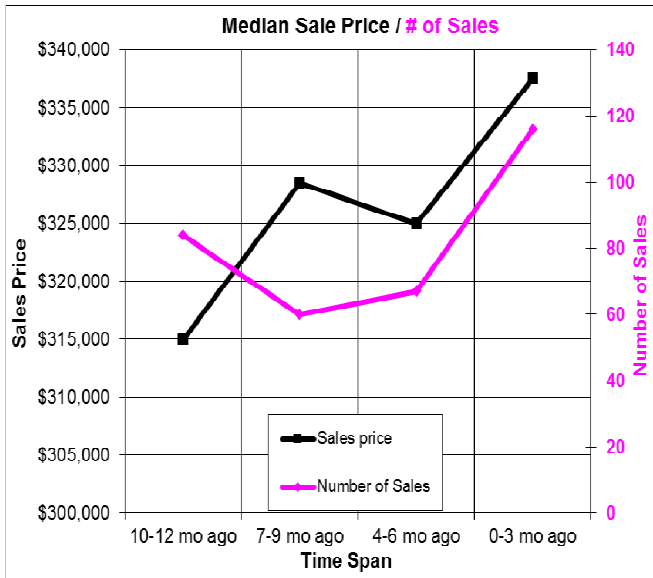


The Past Year in the Grass Valley Area



Here we look at properties in the Grass Valley area. The price per SF has increased a bit but smaller homes have been bought. At below left we compare sales price and the number of sales. At below right we have the inventory analysis. 08/31/2016.



Don Machholz | Don's Appraisals

Certified Residential Appraiser

List price appraisals to help set/reset price of house for about \$275

Other types of appraisals also available

Office: 530.320.8204

Email: donthepraiser@aol.com

Website: donsappraisals.com

Go to my web site for past issues of these handouts