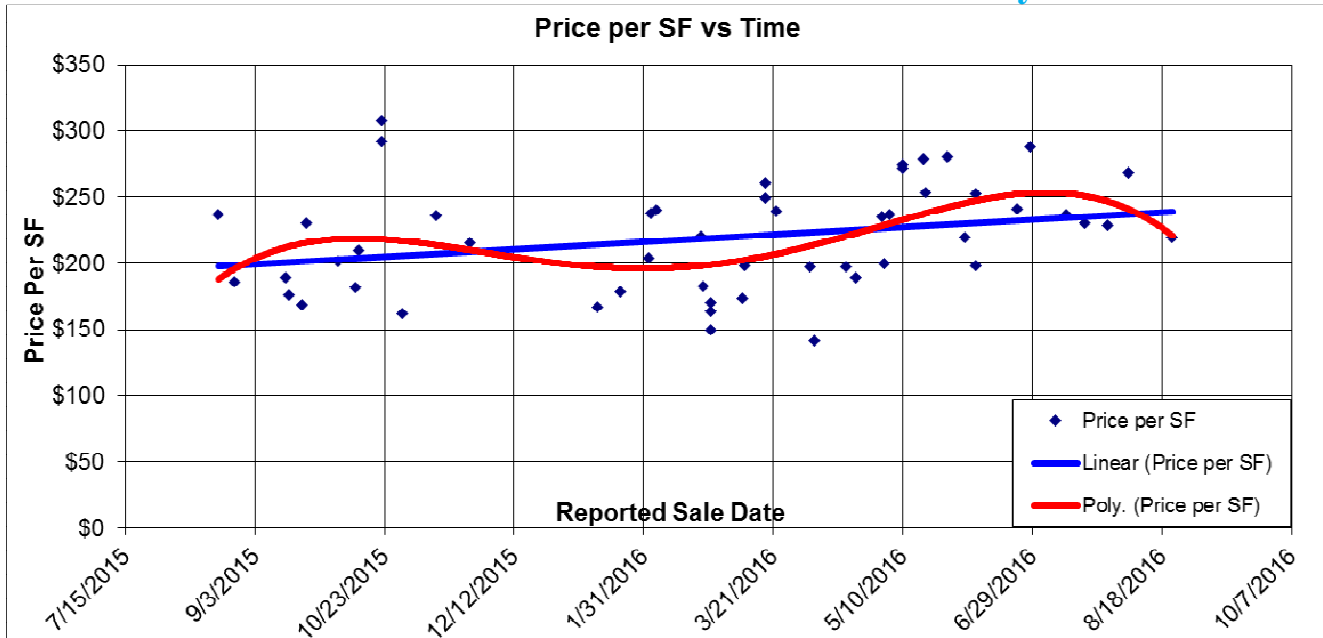
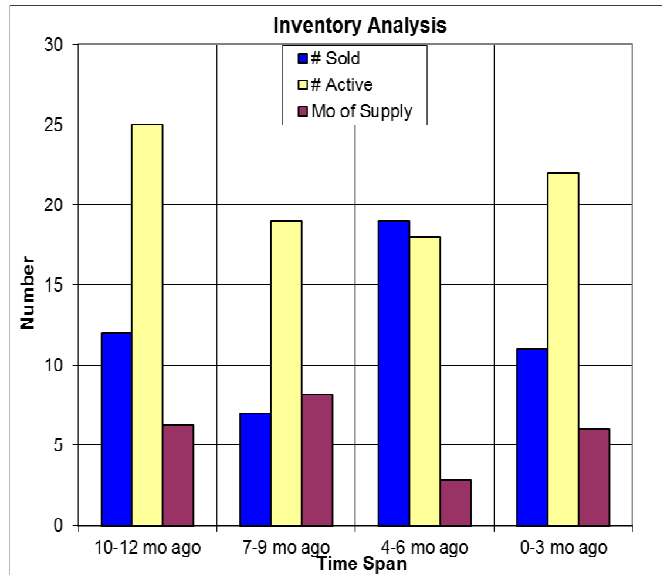
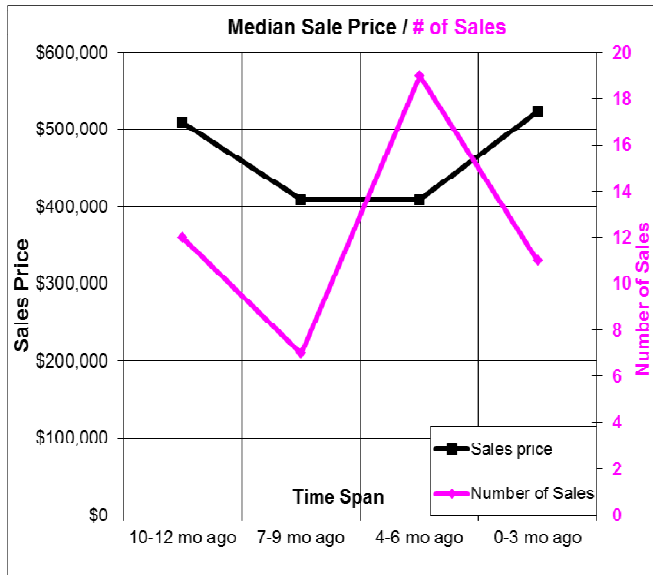


The Past Year in Southern Nevada County



Here we look at properties in southern Nevada County, using MetroList. The price per SF has increased a bit but the overall sale price trend line held steady as smaller homes have sold. At below left we compare sales price and the number of sales. At below right we have the inventory analysis. 08/25/2016.



Don Machholz | Don's Appraisals

Certified Residential Appraiser

List price appraisals to help set/reset price of house for about \$275

Other types of appraisals also available

Office: 530.320.8204

Email: donthepraiser@aol.com

Website: donsappraisals.com

Go to my web site for past issues of these handouts