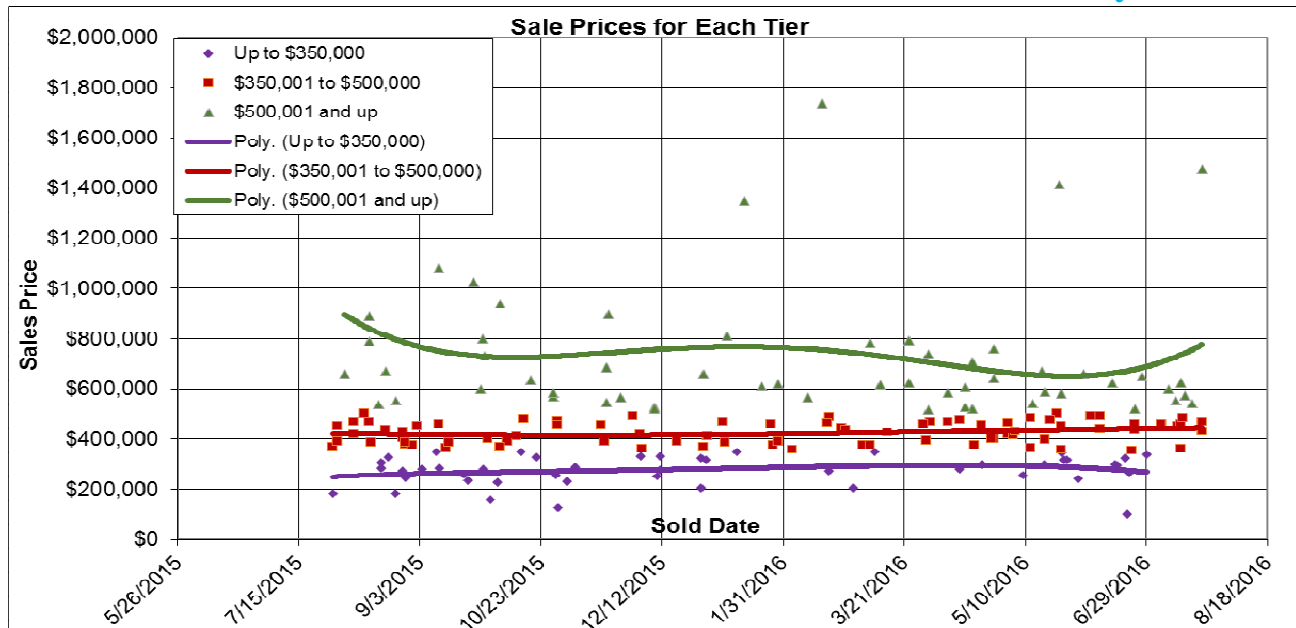
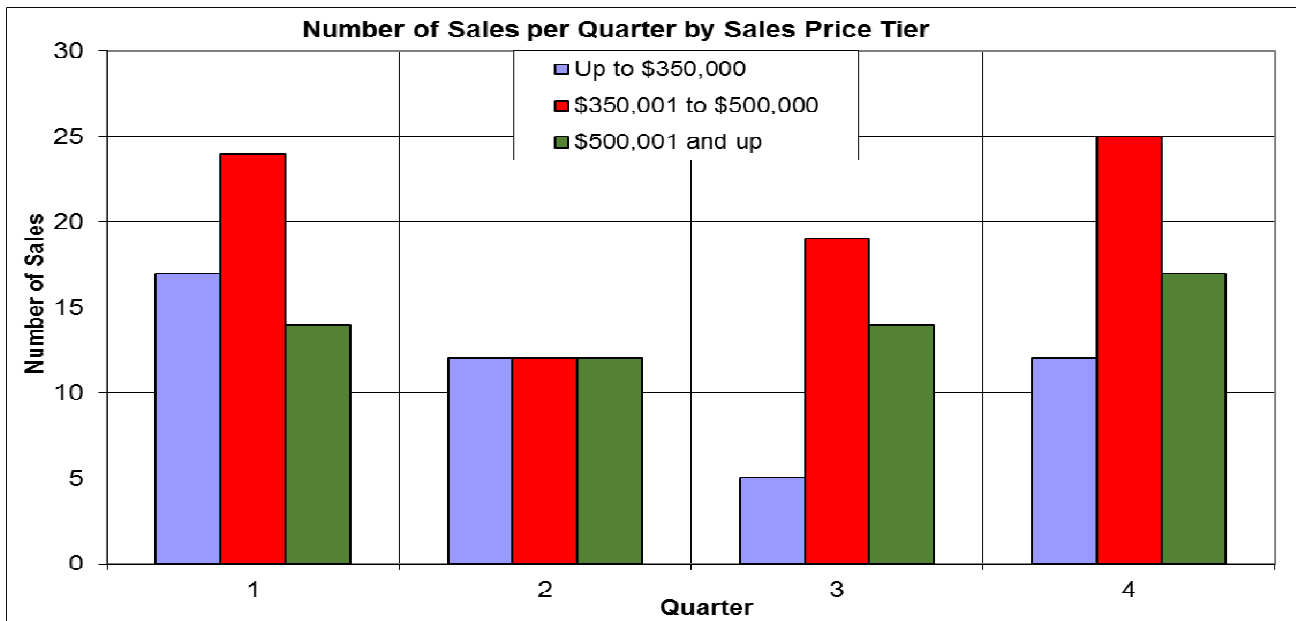


The Past Year in Meadow Vista and Christian Valley



Here we look at properties in Christian Valley and Meadow Vista. The sale prices are aligned by different segments, divided at \$350,000 and \$500,000. Below we have the number of sales for each segment for the past four quarters. 07/28/2016.



Don Machholz | Don's Appraisals

Certified Residential Appraiser

List price appraisals to help set/reset price of house for about \$275

Other types of appraisals also available

Office: 530.320.8204

Email: donthepraiser@aol.com

Website: donsappraisals.com

Go to my web site for past issues of these handouts