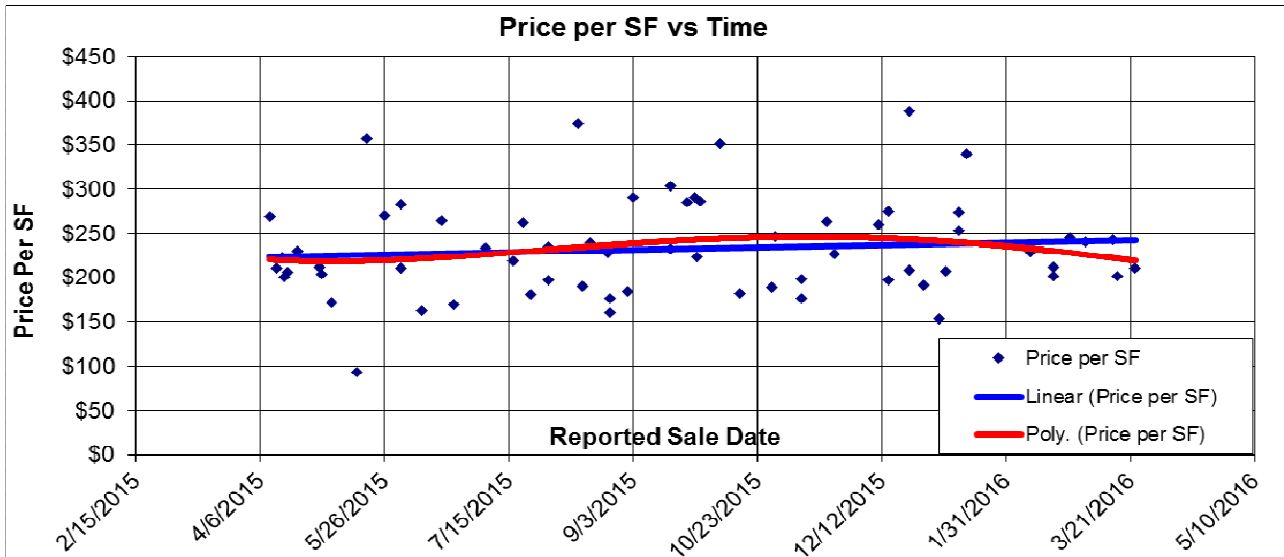
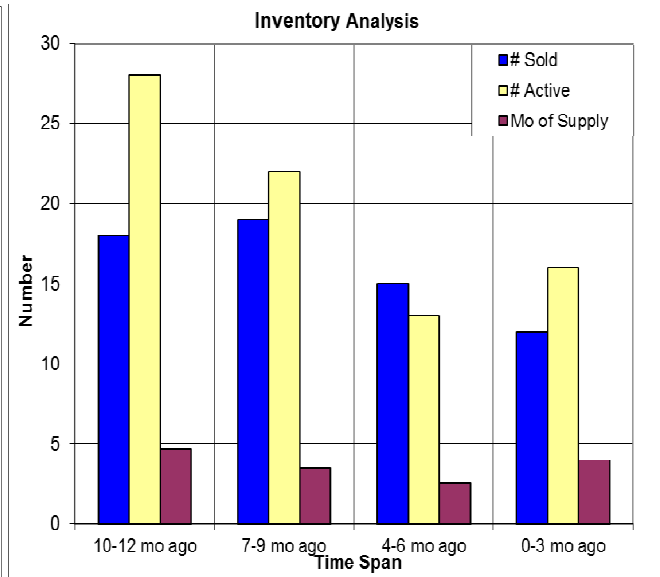
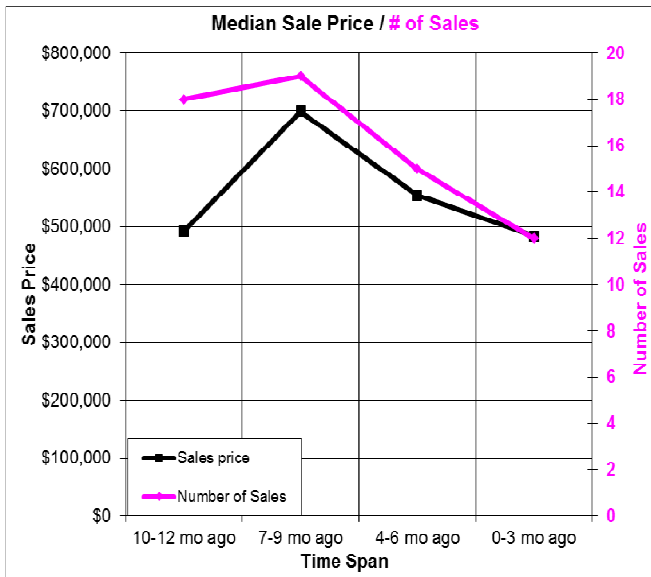


The Past Year in Areas 12306, 12307, S and W Auburn



Here we look at properties in S and W Auburn. The price per SF increased slightly over the past year, but the overall price decreased in the past quarter as smaller homes were sold. The percentage of REOs sales has decreased to 0% in the past nine months. At below left we have the median price each quarter, with the number of sales. Inventory analysis is below right, with the number of sales shown in blue, and the number of actives at the end of each quarter is in yellow. Median DOM for sold properties is now at 51 days (half of what it was last quarter) and the months of housing supply is now up to 4.0 months. 04/07/2016.



Don Machholz | Don's Appraisals

Certified Residential Appraiser

List price appraisals to help set/reset price of house for about \$275

Other types of appraisals also available

Office: 530.320.8204

Email: dontheppraiser@aol.com

Website: donsappraisals.com

Go to my web site for past issues of these handouts