

Seasonal Variations in Newcastle

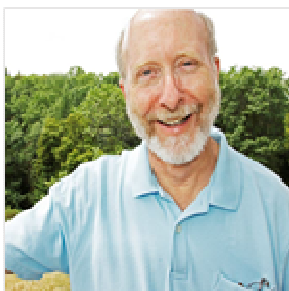
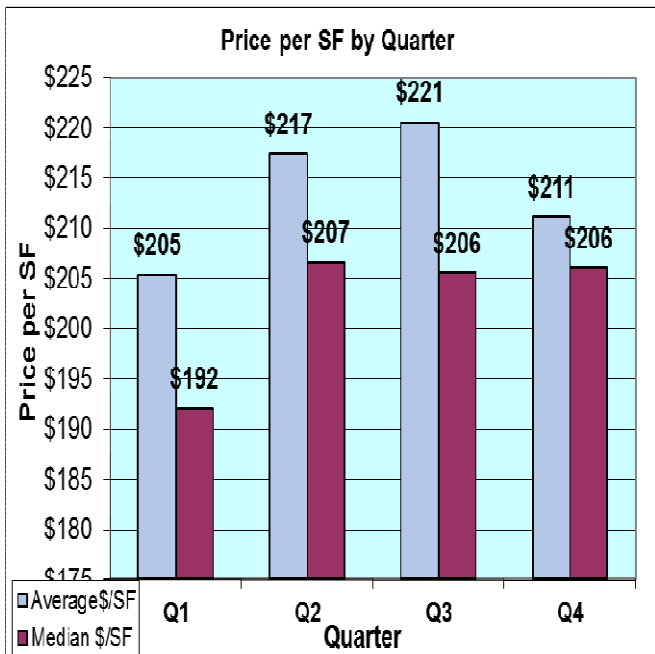
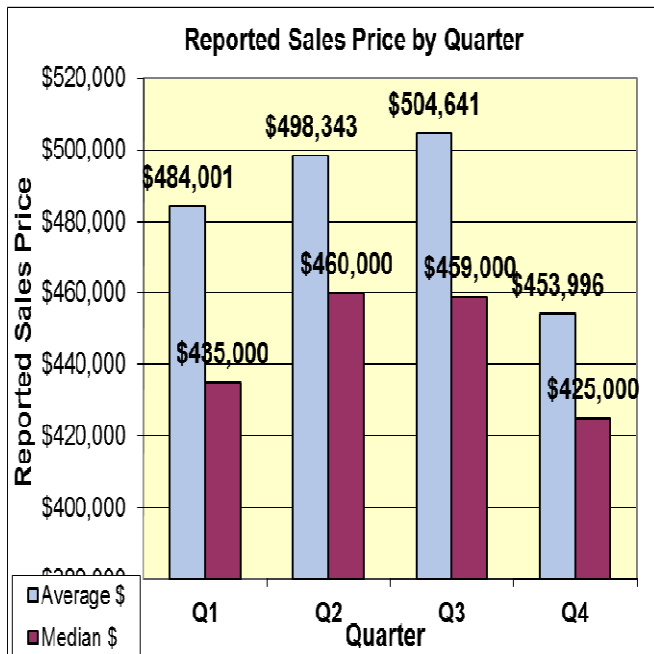
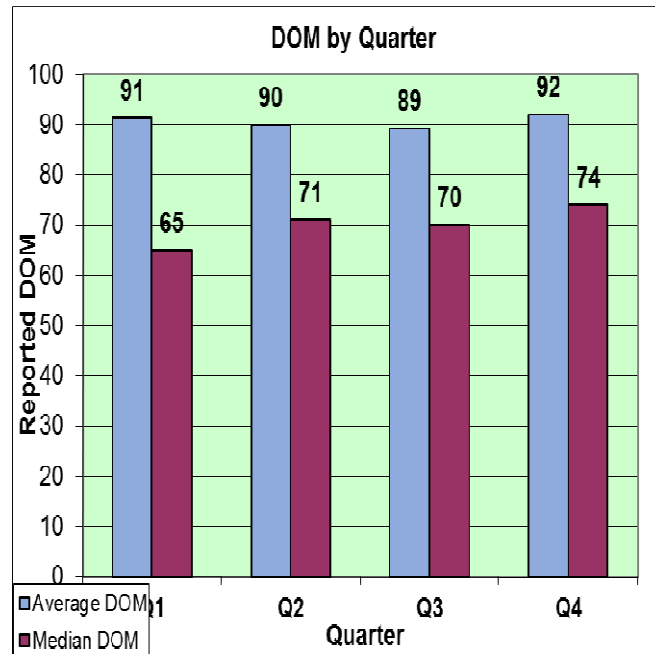
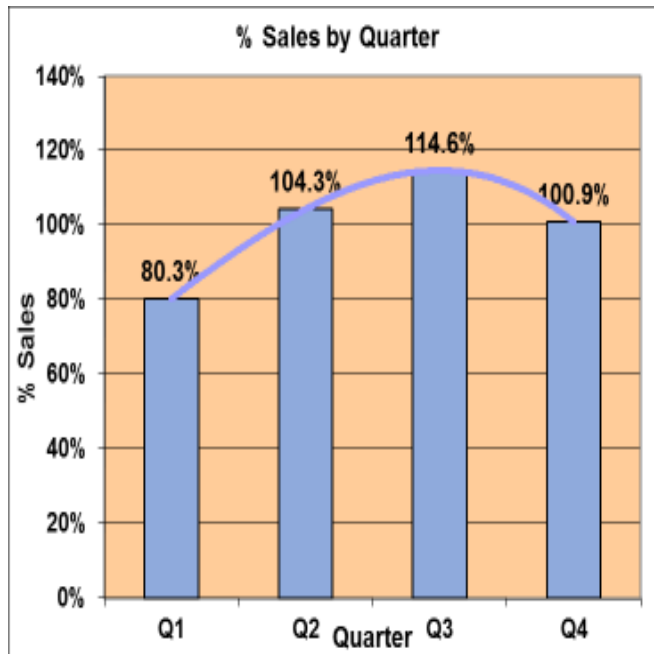
Here we stack 15 years of homes sales (932) in Newcastle and sort them by quarters. 01/7/2016

Quarter 1 is January 1 through March 31: Fewest sales, low prices.

Quarter 2 is April 1 through June 30: Large number of sales, high prices.

Quarter 3 is July 1 through September 30: Largest number of sales, fewest DOM, highest prices.

Quarter 4 is October 1 through December 31: Longest DOM.



Don Machholz | Don's Appraisals

Certified Residential Appraiser

List price appraisals to help set/reset price of house for about \$275

Other types of appraisals also available

Office: 530.320.8204

Email: dontheppraiser@aol.com

Website: donsappraisals.com

Go to my web site for past issues of these handouts