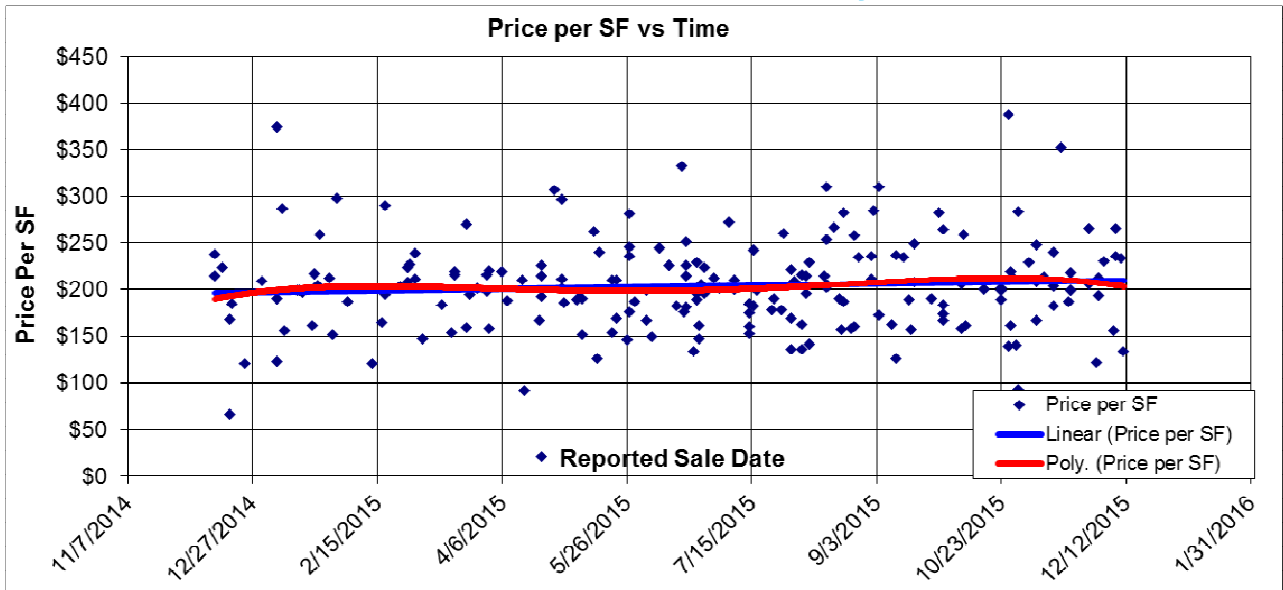
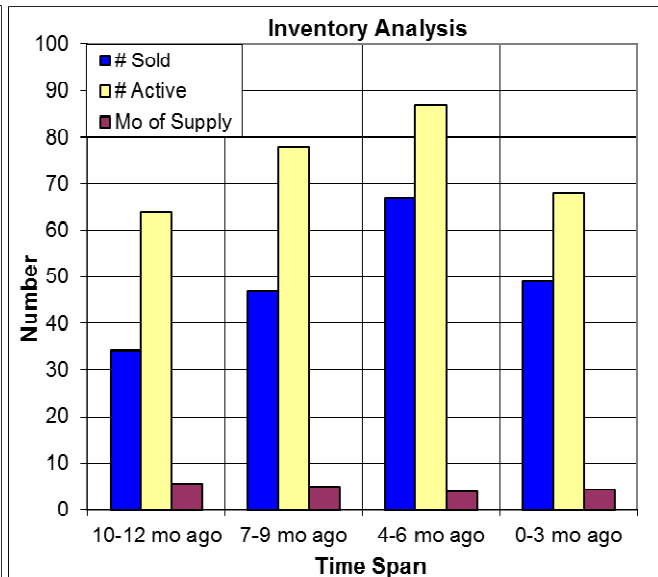
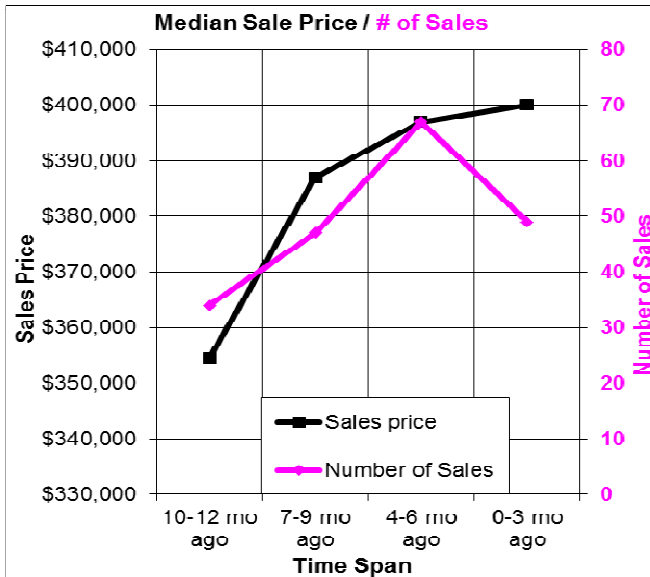


The Past Year in the Nevada City Area



Here we look at properties in the Nevada City area. The price per SF increased slightly over the past year, and the overall price increased slightly too. The percentage of REOs sales and Short Sales stayed below 10% all year. At below left we see the median price vs the number of sales. Inventory analysis is below right, with the number of sales shown in blue, and the number of actives at the end of each quarter is in yellow. Median DOM for sold properties is 59 days, and the months of housing supply is now at 4.2 months. 12/16/2015.



Don Machholz | Don's Appraisals

Certified Residential Appraiser

List price appraisals to help set/reset price of house for about \$275

Other types of appraisals also available

Office: 530.320.8204

Email: dontheppraiser@aol.com

Website: donsappraisals.com

Go to my web site for past issues of these handouts